

SCCF

Sanibel-Captiva Conservation Foundation

Annual Report 2010-2011

Map legend on back cover



Conserved Lands on the Islands

Dear SCCF Members and Island Neighbors,

Wow! What a year it has been for SCCF and the island community. Thanks to you, we have preserved a 28-acre Northern Sanibel Wildlife Corridor. SCCF's Wildlife Habitat Management staff have begun restoring it to better function as habitat for our "wild" neighbors. At the same time, the volunteer Hammerheads and our Environmental Education staff are working to turn the Bailey Homestead into an interpretive site for the nature and history of the islands. This unprecedented land acquisition would not have been possible without the generous giving of time and treasure by trustees, campaign committee members, and thousands of donors for whom we are eternally grateful. Thank you, thank you!

Going forward, our work continues to be guided by our mission: "The conservation of coastal habitats and aquatic resources on Sanibel and Captiva and in the surrounding watershed."

To share how that works in practice, we've challenged ourselves to ask the question:

WHAT HAVE WE DONE LATELY?

Well, the short answer is...a lot. We know it's not enough to look back on our land acquisition history, the work that helped make these islands the nature sanctuary they are today.

You can read about all our program areas in this report. This year, for the first time, we're also send-

ing you the enclosed map. It represents some of the work being done by our staff and the locations of their efforts. We're proud to share these accomplishments with our members and neighbors.

Let us honestly share that we're feeling the pressure to keep all our programs and projects moving forward after the massive capital undertaking that was the Bailey land campaign. Augmenting grant monies with contributions remains a necessity for covering our operating expenses. That's a tough thing to ask for on the heels of last year's \$5.3 million campaign.

After looking at the grant monies our staff has secured, and matching funds for those grants generously given by a small group of major donors, we are able to set the remaining FY 2011-2012 Annual Fund Drive goal at \$650,000. While that remains a daunting prospect in this economy, it is 1/8 of the support we gratefully received from you last year. We count on this support — combined with grants and other income — to balance our budget. Can we count on your support again this year? Please use the enclosed envelope to support our mission with a tax-deductible gift to the Annual Fund Drive.

Finally, we hope you will consider stopping by our Nature Center to ask us about what we've done lately. We'd be happy to have that chat. Until then, thanks for all you do to make your Conservation Foundation so effective.

Sincerely,



Paul Roth
President



Erick Lindblad
Executive Director

Marine Laboratory

Blind Pass/RECON

The re-opening of Blind Pass provided an opportunity to study the impacts of the opening. From 2008-2010, the Marine Lab collected and analyzed data, with intensive sampling with RECON (River, Estuary and Coastal Observing Network of seven in-water sensors transmitting real-time data). Geographic Information System (GIS) analysis revealed that positive changes in water quality were found within two kilometers of the inlet. Two NOAA grants through a Gulf of Mexico observing consortium of universities and agencies support 25% of the costs of database activity, data sharing, and maintenance of RECON.

The Lab is working with the Gulf of Mexico Coastal Ocean Observing System (GCOOS, of which the Lab is a signatory member) to integrate RECON into GCOOS's Data Portal.

Water Quality Seagrass in the Refuge

Critical management questions related to the Caloosahatchee and releases of freshwater are the principal drivers of Marine Lab research within the J.N. "Ding" Darling National Wildlife Refuge. Monthly



Above: Dr. Rick Bartleson collecting water samples in the Refuge; Below left: Mark Thompson collecting water samples on Captiva. Far right: Jeff Siwicke and Nicole Martin with scallops, getting ready for the Pine Island Sound Scallop Search (photo courtesy Carol Orr Hartman/Sanibel-Captiva Islander)

water samples and annual seagrass habitat surveys are collected for the purposes of informing managers about Refuge habitat conditions related to Lake Okeechobee water management.

Captiva Water Quality Study

Concerns about beach closures and declines in water quality around Captiva prompted a two-year study (see Page 9 for story).

Scallops

The Marine Lab, with Seagrant and FWC are raising awareness and studying the once plentiful bay scallop populations in Pine Island Sound. The Adopt a Scallop (scallop farming) and Scallop Search use volunteers to track scallop survival and population sizes to one day

Wildlife Habitat Management

Small Mammal Sampling

Small mammal sampling allows us to monitor the population of rodents, including the Florida-listed Sanibel Rice Rat, on our properties. These rodents provide food for many predators, including hawks and owls. We sample twice a year, once during the wet season and again in the dry season. Small live traps are baited and checked every morning. Any captures are marked by coloring their ear with a colored permanent marker.

Sea Turtle Monitoring

Sea turtle monitoring began May 1 and continues

until the last nest hatches, usually sometime in October. Volunteers and staff patrol the beaches every morning at sunrise to document new crawls, mark nests, and monitor existing nests.

Gopher Tortoise Surveys

Gopher tortoise surveys are conducted every October on SCCF properties to assess the gopher tortoise population. A count of burrows is done and each burrow is classified as active, inactive, or abandoned.

Cont'd on Page 4

Marine Lab - continued from left

return the bay scallop to a harvestable resource.

Prop scar repair by Tarpon Bay

Propeller damage to seagrass habitats is a major problem around Sanibel Island. Some of the scars are so damaging that seagrass sods need to be planted to accelerate the recovery. The seagrass is propagated and grown at the Lab, mapped using Geographic Information Systems (GIS) and planted near Tarpon Bay.

Clam Bayou

In what should be considered a major success in the Marine Lab's short history (since 2002), the restoration of Clam Bayou has resulted in thriving mangrove shorelines, abundant oyster reefs, lush seagrass, and schools of juvenile fish. Geographic Information Systems (GIS) mapping has tracked the progress of the restoration that began in 2006.



The work of our Marine Laboratory during this fiscal year would not have been possible without Gretchen Valade's extraordinary support.



Photo Plots. Left: Frannie's Preserve on 7/6/00, just after the removal of Brazilian Pepper. Right: on 1/24/06.

Fish Sampling

Fish sampling is conducted in the freshwater wetlands every wet season to monitor the freshwater fish species found on Sanibel. It also allows us to monitor for the occurrence of any exotic or invasive fish species present.

Shorebird Monitoring

Three species of shorebirds nest on Sanibel and Captiva Islands: Snowy Plovers, Wilson's Plovers, and Least Terns. All three are ground nesting birds with well camouflaged nests that could easily be trampled. SCCF staff and volunteers monitor the beaches daily from late February to early August searching for nests, staking and monitoring nests, and monitoring hatchlings. Ongoing studies are also done to monitor beach traffic, prey abundance, and nest site selection.

Photo Plots

Photo plots consist of photographing and identifying plant species and growth at a set location

every year. This allows us to monitor our restoration efforts over the long term.

Prescribed Fire/Burns

Fire is a natural part of Florida ecosystems. In areas where natural fire events are rare due to development, prescribed burns are conducted in a controlled way to mimic natural fire events and ensure a healthy ecosystem.

Habitat Restoration and Maintenance

Whenever SCCF purchases a new property, habitat restoration begins. The initial steps involve the removal of all invasive, exotic species followed by planting native species. Habitat restoration is complete on all SCCF properties (except the Bailey Homestead, see below) but maintenance is ongoing.

Restored properties need to be checked yearly for resprouts of exotic plants. Resprouting happens from seeds in the ground or seeds in animal feces (birds, raccoons, etc.) that begin to grow after

Cont'd on Page 6

Natural Resource Policy

Water Quality:

Toxic algae blooms in the Caloosahatchee required Health Department warnings posted to avoid fishing and swimming. Blooms lasted over eight weeks, and killed all the estuary freshwater grass needed by federally endangered manatees. The bloom also impacted an entire year class of fisheries, bait fish, blue crabs, shrimp and oysters. We are working to gain protective water quality standards at Federal and state levels.

Water Supply:

This year saw drought conditions and, once again, water managers cut off all freshwater flow to the Caloosahatchee and estuary. Conditions are critical. The lack of rain and tropical moisture this summer mean persistent drought for the coming dry season, with resulting ecological and economic impacts. We are working with water managers to find alternative



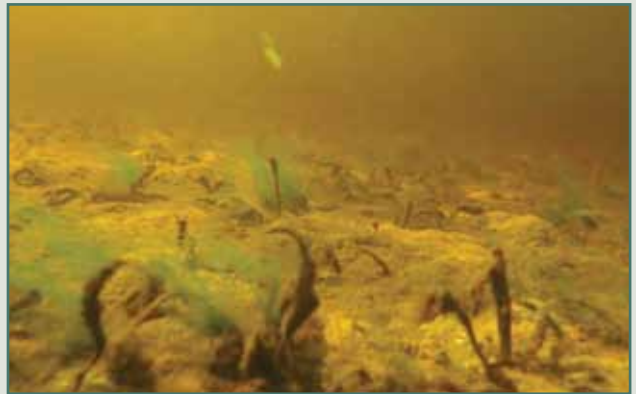
A severe algal bloom this past summer, caused by water management practices, once again afflicted the Caloosahatchee. We continue fighting for the needs of our ecosystem.

methods for fairly managing water for all users.

Cont'd on Page 6



August 2010: Photo of healthy stand of tapegrass on the south shore of the Caloosahatchee upstream of the W.P. Franklin Lock & Dam. Shorter grass in the foreground has been grazed by manatees.



December 2010: Photo of Caloosahatchee tapegrass at Beautiful Island. Tapegrass (dark blades) is dying due to high salinities and epiphytic algae (bright green) are colonizing what is left, further impacting the dying tapegrass.

Water Storage

Capturing and storing water throughout the greater Everglades ecosystem and in the Caloosahatchee watershed is a priority restoration goal that policy staff has been working to achieve north, south and west of Lake Okeechobee.

Replacing lost storage solves many problems, it rehydrates wetlands, recharges aquifers, reduces freshwater lost to tide, provides water quality treatment and restores wildlife habitat functions, providing benefits to the estuaries, Lake O, the Everglades, Everglades National Park, Biscayne National Park and Florida Bay.

Opportunities include a proposed National Wildlife Refuge - the "Everglades Headwaters NWR" - north of lake O, restoring historic flows south out of Lake O and water farming -paying large landowners to store water.

Water Flows

Another top policy priority is improving water policy decisions about where, when and how water is shared. Competing uses such as municipal water supply and agriculture are prioritized at the expense of natural systems. The volume and timing of water flow to natural systems such as the estuary is critical to protect and sustain healthy aquatic resources. Current water management policies either dump or cut off fresh water supply for the estuary resulting in poor water quality and impacts to commercial and recreational fisheries and protected species habitats for federally endangered manatees and smalltooth sawfish.

Legal Action — Cape Coral Stormwater:

The Florida Department of Environmental Protection allowed Cape Coral to remove a required stormwater barrier known as the Ceitus boat lift. The result

Cont'd on Page 26

Wildlife Habitat Management -- continued from Page 4

sunlight is available. Many areas need to be burned every few years to keep the desired habitat. Without burning, succession occurs and the habitat can transition. Mowing and manual removal of undesired plants (especially along work trails) is also important in preserving the habitat.

Drift Fences

Drift fences are used to sample the reptile and amphibian populations on the island. The project gives us a clear idea of what species are found in a specific area and how common they are.

Bobcat Monitoring

Monitoring the Islands' bobcat population began in early 2011. The project's main goals are to identify the important prey species of the bobcat's diet and to determine a population estimate.

Bailey Homestead Habitat Restoration

Removal of exotic vegetation has begun on the Bailey Homestead Preserve. As of September 19, 2011, heavy machinery is being used to clear dense areas of invasive, non-native vegetation. A work trail has been created to facilitate access to both ends of the property by work vehicles. This will allow us to physically remove the invasive, non-native vegetation from the site.

SCCF Water Quality Study on Captiva Leads to Increased Native Landscapes

In response to local concerns about Sanibel and Captiva's water quality, in 2008, the SCCF Marine Lab initiated a two year research study to determine the condition of waters surrounding the islands and identify problems.

Funded by the Captiva Community Panel (CCP) and Lee County Tourism Development Council (TDC), the study identified two problems and several potential solutions. Stormwater runoff contains a lot of bacteria and therefore, the Marine Lab staff recommended the installation of native landscapes to intercept rain and slow the delivery of runoff and harmful bacteria to marine waters. A second finding identified nitrogen leaching from septic drain fields into groundwater. Native landscapes could help to reduce the nitrogen through underground absorption by the roots.

Concurrent to the Marine Lab study, the CCP received an urban and community forestry grant from the Florida Forest Service for \$17,200 to purchase and install native trees. Since the spring of 2010, the SCCF Native Plant Nursery had been working in con-

junction with the CCP to determine appropriate tree species to plant on Captiva and to select planting sites for the grant funds.

After several CCP board members listened to the presentation by Marine Lab staff describing the findings of the Lab's two-year study, they decided to apply the funding to landscape Andy Rosse Lane. This area is a prime spot to attempt to slow the movement of runoff to local waters, as it is full of parking lots and other impervious surfaces and also was the ideal place for native landscaping.

In the end, the progressive actions by the CCP, the Marine Lab and the Native Plant Nursery resulted in an attractive and functional native landscape, with better water quality and ecosystem services while also supporting wildlife species. In addition to the right-of-way along Andy Rosse Lane, other grant-funded landscaped areas include Turner Beach and scattered locations along Captiva Drive. Over 110 trees were installed on Captiva, representing 15 different native species including cabbage palm, gumbo limbo, mastic, green thatch palm, cinnamon bark, and strangler fig.

Protecting Black Mangroves on Captiva

Rae Ann Wessel, along with Erick Lindblad and Kristie Anders have been engaged on a Captiva issue for the past seven years. Working with the Captiva Community Association and the Conservancy of Southwest Florida, we have been fighting to protect black mangrove wetlands on the northeastern end of Captiva from being turned into luxury townhomes by Plantation Development, LLC (Mariner).

This past Spring, the U.S. Army Corps of Engineers Jacksonville District denied Plantation Development's application to build "Harbour Pointe." Mariner has appealed the decision. The Corps in Atlanta is reviewing the appeal.

SCCF Staff Regional Committee Service

SCCF staff actively works with a number of local and regional groups.

Erick Lindblad is in the third year of a four-year term on the Florida Communities Trust Board, part of the state's Florida Forever program. He was appointed to the six-member board by Governor Charlie Crist in 2009.

Eric Milbrandt, Ph.D. is a contributing author and co-principal investigator on the MARES project (Marine and Estuarine Goal Setting for South Florida) where scientists describe ecosystems and their services to humans for communicating with resource managers. Drs. Bartleson and Milbrandt serve on the Charlotte Harbor National Estuary Program's Technical Advisory Committee which reviews scientific and management. Dr. Bartleson provides scientific information to the Southwest Stakeholders on weekly conference calls. Drs. Coen, Milbrandt, Bartleson and Rybak are affiliated with Florida Gulf Coast University.

The Marine Lab has established thriving academic collaborations with numerous universities, including Florida Gulf Coast University, the University of South Florida, Florida Atlantic University (and associated Harbor Branch Oceanographic Institute), the University of New Hampshire, Rutgers University, the University of South Alabama, Dauphin Island Sea Lab, Dickinson College, VIMS and NOVA Southeastern University, as well as Florida Fish and Wildlife Research Institute (FWRI), Monterey Bay Aquarium Research Institute, The Nature Conservancy, and Mote Marine Laboratory.

Rae Ann Wessel serves on the Lower West Coast

Watershed Subcommittee of the Regional Planning Council. She's a member of the Environmental Advisory Committee of the Everglades Foundation and serves as SCCF's representative for the Everglades Coalition. She's on the board of the Southwest Florida Watershed Council and is a founder and past president of CRCA (Caloosahatchee River Citizens Association) Riverwatch. She currently serves on Lee County's Historic Preservation Board and was a member of the Local Planning Agency.

Kristie Anders works with local REALTORS®, providing ongoing training and a state-accredited, 14-hour class on the conservation history of the islands. Attendance is required for new REALTORS®.

Chris Lechowicz is a member of the International Union for the Conservation of Nature (IUCN) Tortoise and Freshwater Turtle Specialist Group (TFTSG); membership is by appointment only. He is also a Board member of the Florida Turtle Conservation Trust; serves on the South Florida Exotic Animal Task Force and on the FWC Imperiled Species Advisory Committee for Freshwater Turtles and the Diamondback Terrapin Working Group. Joel Caouette is a member of the Snowy Plover Working Group Steering Committee, the Lee County Shorebird Partnership, and the Florida Ornithological Society.

Jenny Evans is Treasurer of the Florida Association of Native Nurseries and serves on the Lee County Extension Service Horticultural Advisory Board. She is also serving on the Lee County Roadway Landscape Advisory Committee (representing the Florida Native Plant Society).

Bailey Land Campaign and Annual Fund Drive

We're still pinching ourselves at the speed and magnitude of this year's fundraising activities. Words are inadequate to explain all the hard work and generosity exhibited by our members and neighbors. Because of them, we were able to declare victory in our \$5.3 million campaign.

As a result, four important goals have been achieved: the 28.3 acre northern wildlife corridor will be protected in perpetuity as the Bailey Homestead Preserve; the restoration of that habitat has been funded and is underway; the historic Bailey family home is being transformed into an interpretive center and conservation gateway; and the \$675,000 raised

for our Annual Fund Drive was combined with staff-generated grant revenues to support the annual operating budget in FY 2010-2011.

Campaign co-chairs Chip Lesch, Janie Howland and John La Gorce led volunteer committee members Mary Lou Bailey, Brenda De Capua, Bill Fenniman, Terry Igo, Chuck Ketteman, Tom Lagan, David Lowden, Eric and Mary Ellen Pfeifer, Philip Puschel, Robbie Roepstorff, Paul Roth, Richard Shipley, Martha and Rick Siders, Patti Sousa, and Sandy Stillwell. Our profound thanks to them, our trustees and staff members, and most importantly, our members and island neighbors who contributed to the attainment of these goals.

Very Special Thanks to These Bailey Homestead Preserve Major Donors

Anonymous Donor	Richard Shipley	Shipley Foundation	
Tom and Mimi Adams	Mr. and Mrs. Charles C. Hart	John and Kay Morse	Sallie Soule
Katherine B. Andersen Fund of The Saint Paul Foundation	Mr. and Mrs. Robert Holder	Mr. and Mrs. James C. Pigott	Brad and Shelli Stanback
Anonymous Donor	Dr. John S. Hutton & Ms. Sandra S. Gross	Philip and Roberta Puschel	Fred and Alice Stanback
Bank Of The Islands/ Edison National Bank	Mr. and Mrs. Robert H. Jeffrey	Drs. John G. Raffensperger and Susan Luck	Carol and Larry Strange
Douglas and Leah Beck	Mr. Michael F. Kelly	Joyce and Don Rice	Mr. and Mrs. Roy Sweeney
Mr. and Mrs. John M. Boler	Chuck and Helen Ketteman	Todd and Karen Roberts	Ms. Lee Anne Tauck
Linda and Wayne Boyd	Mr. Steven G. King	Robbie and Geoffrey Roepstorff	Mrs. Gretchen C. Valade
Mr. and Mrs. William A.C. Brooks	Ms. Robin C. Krivanek	Mrs. Rose Rogers	Bill and Annie Vanderbilt
Bruning Foundation	Deborah and John La Gorce	Peter and Peggy Rosenblum	Bill and Judy Walter
Corina J. Dekker	Chip and Sheryl Lesch	Mr. and Mrs. Paul F. Roth	James and Vedna Welch Foundation
Blake and Jan Devitt	Mr. and Mrs. Calvin C. Linnemann	Sanibel-Captiva Audubon Society	Jane E. Werner
Barbara and Tom Dunham	Noel Mann	Mr. and Mrs. John D. Schubert	Dr. and Mrs. William H. West
Greenheck Family	George and Miriam Martin Foundation	SEBA Foundation	Mrs. Martha Whitehouse
Dr. and Mrs. Thomas Hansen	Middendorf Family Foundation	Dr. and Mrs. Howard Sheridan	Bob Wigley
Mr. and Mrs. Dale S. Hanson	Mr. and Mrs. Attila H. Molnar	Jonathan and Evelyn Rose	Mr. and Mrs. Robert H. Wingels
Dr. Bette Harig	Frank and Carol Morsani	Mr. and Mrs. Dean L. Skaugstad	John and Martha Wolf

...And thanks to all who helped with the Bailey Homestead Preserve acquisition, renewed their annual memberships, and supported our annual operations and other targeted program needs:

Mr. and Mrs. Don Abbott	Lawrence and Suzanne Anderson	Mike Badenoch and Francie Slane	Mr. C. B. Basinger	Mr. and Mrs. Stuart Berke
Joan and Roy Abrahamson	Mary M. Anderson	William Badgley and Carol McEntee	John and Mary Bates	Andy and Cindy Berman
Clark and Anna Abston	Mr. and Mrs. Ralph E. Anderson	Jean Baer and Betsy Ventura,	Gillian and David Bath	Katherine and Christopher Berman
Helen S. Ackerman	Mr. and Mrs. Thomas J. Andrew	Sanibel Island Farmers Market	Mr. Steven G. Batson	Walter and Wendy Berninger
Mr. John Ackler	Christine and Paul Andrews	Benjamin Bailey	Dave and Jean Bauerly	Edward and Carol Berninger
John and Dee Acuff	George W. Andrews and	Mr. and Mrs. Francis P. Bailey	Mr. and Mrs. David Baum	Ms. Ruth M. Bernuth
Dr. and Mrs. Charles V. Adair	Janine Harding	Mrs. John M. Bailey	Heinrich and Esther Baumann	Harry and Audrey Bertossa
Charles and Linda Adams	Mr. and Mrs. H. P. Andrews	Mr. and Mrs. John T. Bailey	Ms. Barbara Baumecker	James and Linda Best
Donald and Jane Adams	Marcia Andrews	Ms. Mary Lou Bailey	Marion B. Bayers	Mr. and Mrs. Laurence A. Bettcher
Donna L. Adams	Robert and Georgia Andrews	Sarah W. Bailey	Mr. and Mrs. George V. Bayly	Ellen Biegler
Tom and Mimi Adams	Susan Andrews	Bailey's General Store	Mary J. Bayrd	Dr. and Mrs. Bruce Bielfelt
Hayward Adams	Katie Kelly and Mark Angelini	Mrs. Leigh J. Bair	David Beal and Jean Lowe	Tom and JoAnne Bierma
Robert and Andrea Adler	Jim and Betty Anholt	Barry and Janette Baker	Louin and Jane Beard	J. Preston Biglow
Dale and Steve Adler	Anonymous Donor	Charlotte Baker	Mr. James L. Beauchamp	Billy's Rentals
Advent Lutheran-Good Samaritan	Mary Lee Anthony	Ms. Janice Baker	Verna H. Beaver	Linda M. Birch
R. J. Affourtit	Mr. and Mrs. Richard L. Antonini	John and Barbara Baker	Douglas and Leah Beck	Barbara Chappell
Susan Ahlrona	Mr. and Mrs. Jon Apmann	Stanley and Jeannette Bakke	Lowell and Myrna Beck	Ray and Elaine Birk
Thomas and Carol Aikenhead	Ellen M. Dunn and Lawrence D. Appel	Joseph Balabanick	Clair Beckmann	Chuck and Sally Bisbee
Mr. and Mrs. John R. Ake	Ms. Pat Appino	Mr. and Mrs. Charles A. Balch	Mr. Thomas R. Beecher, Jr.	Denise Biscardi
Larry and Shirley Akins	Marc and Jody Applegate	Anthony and Roberta Baldino	Russ and Joann Beermann	Mr. and Mrs. William T. Bisignani
Peg and Fred Albert	Albert J. Arado	Mike and Terry Baldwin	Mrs. Elizabeth Beeson	Dr. LeClair Bissell & Ms. Nancy Palmer
Verda M. Albert	David and Suzanne Arch	Armand and Beverly Ball	John and Denice Beggs	Mr. and Mrs. Gary Bittgen
Dr. and Mrs. Raymond J. Albright	Penny and William Arehart	Mr. and Mrs. Morris Ballen	Donald and JoAnn Beiermeister	Joan B. Bitzer
Donna Aldrich	Sarah Armantrout	Helen Baller	Jane and Jim Bell	Jean S. Black
Anne Aldrich	Mr. and Mrs. Edward Armbruster	Bank of America Matching Gift	Mrs. Mary Bell	Nancy and William Black
Beatrice and Heywood Alexander	Robert Arment	Program	Tom and Cissy Bell	Robert and Winifred Blacklow
Mr. Rodney W. Alexander &	Bert and Pat Armstrong	Bank Of The Islands/	Ms. Anne W. Bellew	Fred and Linda Blaisdell
Mrs. Joan W. Miller Alexander	Dale and Julie Armstrong	Edison National Bank	Christopher Bellows	Jeffrey Blackman and Laura Debruce
Mr. Duncan Alexander	Mr. and Mrs. Michael Armstrong	Mark and Gretchen Banks	Kimberly Belzile	Thomas and Sylvia Bleckwedel
Dr. and Mrs. F. Knight Alexander	Mrs. Elsa G. Arndt	Virginia H. Banks	Robert and Melinda Bendt	Ron and Meg Blevins
Mike and Judy Alexander	Martin and Moni Arnowitz	Doug and Lu Bannerman	Stacey Benedict	Cathy and Henry Block
Alexandra Foundation	Mr. and Mrs. William E. Arthur	Harmon and Ann Banning	Mr. and Mrs. Glen A. Bengson	Ruth and Dick Blodgett
Karen Alleger	Matthew Asen and Mary Jo Bogden	Terry and Carolyn Baranouskas	Dr. Robert B. Benjamin	Dr. John C. Bloom
Mr. and Mrs. William M. Allen, II	Ann Griffith Ash	Mrs. Noel Barbee	Mr. Frank K. Bennett	Charles Boast and Marsha Clinard
Mr. and Mrs. Martin A. Allen	Mr. and Mrs. Herbert J. Ashe	David and Hazel Barber	Mr. and Mrs. Richard J. Bennett	Dr. and Mrs. Steven F. Boc
Mr. and Mrs. Delbert E. Allen	Asplundh Foundation	John and Ann Barber	Benno and Carla Benninga	Jerry and Dodie Bock
Robert and Barbara Allio	Mike and Joyce Assar	Marygrace and Peter Barber	Mr. and Mrs. Raymond F. Bentele	Mr. and Mrs. Richard Boehning
Lorne Almack	Karel Aster	John and Judy Barbieri	Peter and Paula Bentinck-Smith	John F. Bohmfalk
Deborah Almo	Mr. Robert S. Atkinson	Mrs. Patricia C. Barbour	Mr. and Mrs. Alex M. Benyo	Shirley Bohnert and Marcia Leslie
Mr. and Mrs. Michael Alteri	Mr. and Mrs. Patrick V. Auletta	Barnacle Phil's North Captiva	Bob and Sara Berendt	Chuck and Staci Bolanowski
Altria Employee Involvement Programs	Carmen J. Aulino	Landings, LLC	Mr. Don W. Berg	Mr. and Mrs. John M. Boler
Mr. and Mrs. J. R. Amerine	Stephen and Laura Avakian	Ed and Nancy Barnes	Greg and Donna Bergamo	Tom and Mary Jane Bolon
Mr. Lawrence J. Amon	James and Valorie Babb	John and Joyce Barney	Bruce and Carolyn Bergen	Joy Bonhayag
Red and Kristie Anders	William A. or Judith A. Babbitt	J. Barnhart	Jack and Linda Bergen	Ms. Kathy Boone
Brian and Susan Anderson	Gary and Marsha Bach	Mrs. Eleanor M. Barr	David and Esta Berger	Eric F. Boonstra
John Andersen	Donald and Karen Bachman	Richard Bartleson, Ph.D.	Harvey and Fran Berger	John T. Boorman
Katherine B. Andersen Fund of	Drs. Roger and Marilyn Bachmann	Holly J. Bartlett	Drs. Daniel and Debra Bergmann	Mr. and Mrs. John P. Boorn
The Saint Paul Foundation	Nancy L. Bacon	Mary H. Bartold	Mrs. Elizabeth W. Bergstrom	Mrs. Jane B. Bopp

Mrs. Alexandra Bordiuk
Dr. and Mrs. Ralph Borowiak
Mrs. Shirley K. Boscov
Bruce and Shirlee Boselli
Bill and Jaye Boswell
Carol Lyn Boudeman
Woody and Sharon Boudeman
James Boughton and
Lesley Anne Simmons
Mrs. Hilda Bould
Dr. Catherine Bould &
Mr. Charles McDonough
Margaret Boutwell
Kevin Bowden &
Candice Ethridge-Bowden
Mr. and Mrs. Robert E. Bowden
Doris I. Bowen
Don and Joanna Bowers
David and Jane Boxell
Corky and Julie Boyd
Katharine J. Boyd
Linda and Wayne Boyd
Mr. and Mrs. James Boyle
Dr. and Mrs. Lynn W. Boynton
Richard and Mary Braatz
Saralyn D. Brabban
Odette Brabec
Mr. and Mrs. Robert J. Brace
Mrs. Lorinda Bradford
John E. Brant
Jim and Carroll Branyon
Mr. Richard Brashler
Mrs. Shirley Brashler
Mr. and Mrs. J. S. Braun
Drs. Martin and Roberta Braun
Mr. and Mrs. William D. Bray
Agnes Brengle
Carlene F. Brennen
Donald and Kathleen Brigham
Mr. and Mrs. Robert Bringer
Ms. Katharine Fisher Britton
Mrs. Suzanne E. Britton
Marilyn Brocchetto
Anne Brooke and Doug Murray
Paul and Corly Brooke
Lisa S. Brooks
Ron and Debbie Brooks
Mr. and Mrs. William A.C. Brooks
Bob and Jane Brown
Crist and Katherine Brown
Mr. and Mrs. David A. Brown

Dr. Susan M. Kehne and
Mr. Harry Brown
Kenneth and Susan Brown
Paul Brown
Dr. and Mrs. Stephen R. Brown
Steven and Patty Brown
Mr. and Mrs. Michael Brownell
Roger and Barbara Bruene
Rick Brune
Mr. Harold Bruner
Mr. and Mrs. Charles Bruning III
Bruning Foundation
Bill and Peg Brust
Kenneth and Barbara Bryfogle
Anne Brymer
Buchanan Family Foundation
Brian and Kay Bucher
Thomas W. Bucher
Mr. and Mrs. John F. Budd, Jr.
Ms. Renee C. Budke
Joe and Donna Buehler
Beatrice M. Buffam
Robert and Helen Buhner
Mr. and Mrs. Peter Bukowick
Lisa Buleha
Mrs. Debra Bullock
Rodger and Mary Jo Bunnell
Mr. and Mrs. Kenneth M. Burbach
Bill and Tory Burch
Mr. Jaap J. Burck
Anne and John Burden
Ken Burgener and
Linda Warschauer
Mr. Bennett Burgoon, III
Jim and Trudy Burkholder
Mr. and Mrs. John P. Burnham
Natalie Burns
Jonathan and Barbara Burroughs
Mr. and Mrs. Klaus Burzin
Kate and Elan Bush
Mr. Peter K. Butler
Mr. and Mrs. Peter M. Butler
Mary and Dick Butler
Patrick and Aimee Butler Family
Foundation
Ellen Butz
Chuck and Dotty Bye
Bob and Mame Byrne
Bonnie L. Byrne
Richard and Laura Byrnes
Dr. and Mrs. Alan Cadkin

Sarabess and John J. Cahill
Betsy and Chris Cain
Tabitha M. Cale
Richard and Marcy Calkins
Ms. Sandy L. Calkins
Calusa Land Trust
Mr. and Mrs. James F. Calvano
Mr. and Mrs. Bruce Cameron
Fran Cameron
Mr. and Mrs. Elisha E. Camp
Anonymous Donor
Mr. and Mrs. Douglas G. Campbell
Mr. and Mrs. J. Cameron Campbell
Mr. John E. Campbell
Roland and Glenda Campbell
Mr. and Mrs. George Campean
Mrs. Yolanda Cannon
John B. and Jill Canterbury
Wahlfeld Fund
Paul and Cynthia Caouette
Lorraine and Doug Capps
Captiva Civic Association
Captiva Cruises, Inc.
Phillip and Gloria Caramico
Mr. Jack Carey
Dr. and Mrs. Dominick Carillo
Eugene and Mary Jo Carille
Joanne and Bob Carlson
John and Leilani Carney
Fay M. Carney
Mr. and Mrs. David H. Carney
Ms. Mary Lou Carpenter
William and Elizabeth Carr
Daryl and Ann Carter
Follett and Anne Carter
Mr. and Mrs. John A. Carter
Larry and Jane Carter
Mary B. Carter
Dan and Donna Casey
Mr. F. A. Cashero, Jr.
Mrs. Barbara Cassavell
Mr. and Mrs. Arthur J. Cassell
Woody and Betty Cater
Caterpillar Matching Gifts Program
Ms. Marjorie R. Cavalier
Cedar Chest Fine Jewelry
Mr. Lucas Century &
Ms. Dee Serage-Century
Dean and Wendy Cerdan
Laura and Jay Cerny
Lucie and Andre Chagnon

Reynolds and Barbara Challoner
Robert W. Chamberlain
Ms. Sylvia E. Chamberlin
Charlie and Barbara Chambers
Mr. and Mrs. Jefferson Chapman
John and Linda Charlick
Herbert and Joan Chasan
Monie Chase
Philip and Deborah Cheevers
Mr. Irwin Chernin
Mrs. Janet H. Cherrix
Drs. Diane and Gary Chesley
Joe and Nancy Chessare
Jack and Fay Chestnut
Alexander and Saralee Christ
Dr. Joe C. Christian
Bill and Mary Christison
Mr. and Mrs. Scott G. Chryslar
Jim and Kathy Chumley
Mr. Jerry R. Churchill &
Ms. Madeline R. Mayor
Phil and Sandy Cianciola
Mr. Allan Ciha and
Mrs. Christine Milligan-Ciha
Mickey and Becky Ciriello
Deborah Clafin
Eugene and Meredith Clapp
Constance B. Clark
John and Judith Clark
Dr. Maryann Clark
Mrs. Nancy J. Clark
Thelma and James Clark
Ms. Karen Clarke
Arthur and Linda Cleary
Ms. Carol A. Cleave
Cynthia Clemson
Cheryl V. Cleveland
Alexandra V. Cleveland
Tamsan A. Cleveland
Dennis and Mary Clifford
Mike and Beth Clifford
Coastline Tree Service Inc.
Mr. and Mrs. William M. Coats
Sandra and Richard Coddington
Dr. and Mrs. Loren Coen
Don and Lynda Coers
Ann and Roger Cogswell
Dick and Robin Cohan
Mr. and Mrs. Myron J. Cohen
Henry Cohn
Christopher and Susan Coile

Mr. and Mrs. Lauren M. Coile
David and Patrice Colander
Mr. and Mrs. Stephen Colgate
Frank and Joanne Collins
Judy Colton
Comcast
Mr. and Mrs. David K. Comer
Comfort By Design
Committee of the Islands
Larry and Mary Anne Condit
Mrs. Mary Condit
S. Congress Fine Jewelers
Mr. and Mrs. Doug J. Congress
Mr. Jim Conner
Jay Connor
Mr. and Mrs. David E. Connor
Carolyn and John Connors
Mrs. Barbara H. Conolly
Ms. Suzanne H. Conran
Jane Conroe
Mr. and Mrs. Anthony M. Contino
David and Robyn Cook
Donald and Judith Cook
Douglas T. Cook
Susan and Clayton Cook
Barbara and Tom Cooley
Mr. Edward T. Coon
Gordon and Linda Coons
Ms. Anne S. Cooper
George and Jackie Cooper
Nancy and Randy Cooper
Mr. and Mrs. William A. Copeland
Anne Copps
Ms. Judith Coram
Nancy J. Coram
Dr. Peter Blaze Corcoran
Mr. and Mrs. Clifton Cormier
Finbarr M. Corr Ed.D.
Diane and Greg Cortese
Jane Cory
Michael and Linda Costello
Robert and Elizabeth Cottingham
Lee Courtney
Mike, Melanie and Megan Coyne
Mr. Peter T. Craig
Steven Cramer
Drs. Elizabeth and Charles Crandall
Dr. and Mrs. Claude Crawford
Mike and Kendra Creevy
Mr. and Mrs. William A. Crimmins
Dr. and Mrs. William Crockett

Mr. and Mrs. Brad Cronin
Amanda B. Cross
Mr. Robert Crossman
Mike and Joyce Crowder
Richard F. Crowther
Mr. William H. Cruickshank
Dr. and Mrs. James R. Cryder
Dr. and Mrs. Clifford L. Culp
Red and Mary Culver
John and Irma Cummings
Doug and Cathy Cunningham
Mr. and Mrs. Jack Cunningham
Mr. Mike Curler
Neil and Margaret Currie
Mr. and Mrs. Constantine Curris
Dr. and Mrs. Richard R. Curtin
George and Suzanne Curtis
Ralph and Bilye Curtis
Kara Cuscaden
Mr. and Mrs. Lyle M. Cutchin
Bruce and Barb Cutler
Margo and Rob Cutler
Maryann and Jack Czarnecki
Mrs. Nancy Daane
Susan Dailey
John and Bonnie Dale
Francine Dale
Corky and Eleanor Dalton
Mr. and Mrs. John Dalton
James Daly
Mr. and Mrs. Daniel Damiano
Ms. Ruth Dammann
Damroth Foundation
Peter and Sue Danford
Carol Daniels and Dick Jacker
Jack and Jean Dannemiller
Rev. Dr. John H. Danner and
Linda Bradbury-Danner
Mr. and Mrs. Bro D'Arcy
James and Charlene Darst
Judi Daugherty
Mr. and Mrs. David Davenport
Dr. and Mrs. Simeon David
Ms. Patricia L. Davidson
Mr. and Mrs. Joseph M. Davie
Holly Davies
Dominic Davino
Dr. and Mrs. Charles K. Davis
Dr. and Mrs. David Davis
Dick and Carol Davis
Eleanor-Ann Davis

Dr. and Mrs. James Davis
Mrs. Susan Davis
Gail Davoll
Holliday T. Day
Mary Lee Dayton
Joao and Lidia De Azevedo
Mr. and Mrs. Donald Deacon
Jeff and Susan Dean
Ms. Deborah Dearborn
Nancy Debenedictis
Joe and Brenda DeCapua
Irving Decatur and Cecile Derouin
John and Lillian Decker
Carolyn S. DeCoster
Dan and Gina DeDDens
Mrs. Elena DeFonzo
Patrick and Lynn DeFreitas
Nancy Dehnlow
Corina J. Dekker
Mr. and Mrs. Michael Demik
Meleanor and Donald Deming
Richard L. Deming
K. Ann Dempsey
Judy Denault
Alan Den Otter and Allison White
Mick and Sue Denham
Marjorie and Vincent Deprez
Andrea and Daniel Derrington
Daniel T. and Andrea S. Derrington
Fund at The Chicago Community
Trust
Jane A. Desforges
Karl and Marsa Detscher
Mr. and Mrs. Thomas M. Deuber
Mr. and Mrs. Warren Deuber
Mr. and Mrs. Tobe Deutschmann
Mrs. Dorothy DeVasure
Mr. Michael Devine and
Mrs. Victoria Boyd-Devine
Blake and Jan Devitt
Ethel M. Devoy
Mr. and Mrs. Dave DeWalt
Anne Dickerson and Charlie Reid
John and Joy Dickey
Mr. Peter K. Dickinson
Doug and Kate Dietrich
Christopher P. Dietz
Anthony and Elaine DiGiovanni
Mr. and Mrs. Anthony J. Dignazio
Mr. and Mrs. Donald Dillinger
Mrs. Edward V. Dillon

Mrs. John Dillon
Dr. and Mrs. Victor Diorio, Jr
Mr. and Mrs. Robert F. DiPeso
Mary DiRico
Mr. Wesley E. Dirks
Mr. and Mrs. Angelo DiVenere
Diversey Family
David and Janet Dix
Mrs. Helen Dix
Victor and Carolyn Dix
Nancy Dixon
Mr. and Mrs. W. Gary Dobbie
Doc Ford's Rum Bar & Grille
Dr. Elizabeth Doherty
Eleanor Dominek
Richard and Deborah Donahue
Dorothy N. Donaldson and
Aaron Cohen
Ms. Marlene D. Donaldson
Mr. and Mrs. David W. Donker
Jim and Sally Donnell
Mr. Stan D. Donnelly
Mrs. Winifred M. Donoghue
Paul Dooling and Sandra Danussi
Dorado Property Management
Michael and Arlene Doran
Mr. Robert L. Dormer
Mr. and Mrs. Norman Dorsen
Mr. and Mrs. Robert J. Doty
Mr. and Mrs. Daniel R. Doucette
Ed Douglas and Kathleen Redmond
Ms. Norma J. Douglas
Mr. and Mrs. Richard H. Downes
Edward and Elizabeth Downey
Ron and Joan Downey
George and Molly Downing
Mrs. Lucille Drake
Dr. and Mrs. Donald Dreesen
Phillip and Yvonne Dressel
Mr. and Mrs. Derick L. Driemeyer
Mr. and Mrs. Dick Drogosz
Mr. and Mrs. James R. Drotleff
Dick and Wanda Dubbe
Ms. Suzanne Dubuc
Mr. and Mrs. Ray L. Dueltgen
Mrs. Tess D. Dull
The Dunes Golf & Tennis Club
Allen C. Dunham
Barbara and Tom Dunham
Lynda R. Dunham
Mrs. Lois W. Dunnam

Bernie and Lauren Dupre
Joanne and Dick Durst
Gary and Mary Jane Dutton
Paul D. Duval
David and Suzy Dwyer
Jean L. Eaton
Eaton Vance Matching Gift Program
David and Holly Ebel
Dan and Phyllis Eberly
Mr. and Mrs. William B. Eddison, Jr.
Mr. Howard H. Eddy
Jerry Edelman and Maryanne Daly
Edelmayer Family
Thomas and Connie Edgar
Joel and Linda Edinburg
Daniel and Debra Edson
Don and Sally Edwards
Gayle and Paul Edwards
Gary E. Eertmoed
Mr. and Mrs. James C. Egan, Jr.
Ms. Janet Egeland
Don and Ginny Egensteiner
Jimmy and Marge Eger
Mr. and Mrs. Richard A. Ehret
Bob and Jean Eidsvold
George and Maida Eisenberg
Mrs. Huntington Eldridge
Mr. Albert J. Elias
Ellington's Jazz Club
Stephen and Kathleen Elliott
Pamela B. Ellis
Mr. Russell W. Ellis
Margaret Elowson & Erhard Joeres
Jeffrey and Sarah Elsing
John and Nancy Elting
Shannon Emerick
Mr. and Mrs. Charles H. Emerson
Mr. Robert Emmett
James Emrich
Brad Engdahl and Pat Layton
Mr. and Mrs. Joseph G. Engel
Mr. and Mrs. Donald H. Engen
Rich and Sally Ennis
Victor and Joyce Enns
Barbara and Barry Epstein
Charles and Bonnie Erickson
Mr. Robert Ervien, III
Milena M. Eskew
Edie and Hunt Ethridge
Ellis and Diane Etter
Jenny Evans and Jeff Siwicke

John and Judith Evans
Mr. and Mrs. Edwin H. Ewing
Mr. and Mrs. David J. Eyrich
Mary Faegre
Mr. and Mrs. Michael P. Faeth
Gordon L. Faison
Mr. Frank Fallert
Tom and Rita Farmer
Robert and Sharyn Farrell
Ms. June M. Farrington
Ms. Stella Farwell
Wally and Cecy Faster
Rudy and Phyllis Faust
William S. Fay
Mr. and Mrs. Thomas M. Feeley
Ms. Carol J. Feeney
Mr. and Mrs. Richard S. Fein
Barbara Feldt
Diane and Alex Felker
Jim and Kathy Felsenthal
Burton and Helaine Fendelman
Bill and Carol Fenniman
Ferguson Foundation
Balbino and Flora Fernandez
Manny and Jo Fernandez
Ferris Industries
Mr. and Mrs. John F. Fiedler
David Figlioli
Mrs. Sherwood Finley
Shannon Fioravanti
Mr. and Mrs. Paul C. Fischer
William Fischer
Mrs. Ruth C. Fisher
Ms. Madeleine Fitch
Mr. and Mrs. Thomas J. Fitzgerald
Charles and Katharine Fizer
Ms. Tammy Flaherty
Kathy Flaherty
Hans and Leslie Fleischner
Ms. Ginny Fleming
Norm and Helen Flemington
Beryl and Alex Flesh
Andrew and Carol Flett
Ted and Debby Flint
William and Louise Flint
James Flitz and Suzanne Summerwill
Wayne and Joanne Floerchinger
Florida Department of State
Mr. and Mrs. Sheldon Flowers
Millie B. Ford
Lee and Betsy Foreman

Forever-Green Ace Hardware	Mr. Warren Gardner	Francine and David Gomberg	James and Gay Griffith	Kenneth and Rosemary Hanson
Diane and Les Forney	Mr. and Mrs. Art Garfunkel	Jay and Kathryn Gonzalez	Steven K. Grilz	Mr. Charles A. Hapke
John and Margaret Foskett	Mr. and Mrs. Ralph Garramone	Nancy and Frank Goodwin	Lynn and Beverly Grimshaw	James A. Harbaugh and Shelly Ebbert
Mr. George G. Foster	Mr. and Mrs. Alan M. Gast	Michael Goodwin	Bruce and Jeanne Grossnickle	Barbara Harcourt
Will and Frances Foster	Ted and Lois Gasteyer	Bill and Debbie Goolsby	Jim and Christina Grote	Gene and Mary Jo Hardy
Mr. William L. Foster	Mr. and Mrs. George Gater	Jerry and Carolyn Gorby	Mr. Richard Grumbine	Doris Davey Hardy
Bruce and Betsy Found	Ms. Mary Jane Gay	Ms. Carol R. Gordon	Patricia Grupp	Dick and Marilyn Hare
Mr. Jim Fowler	GE Foundation - Matching Gifts Program	Mary Ann Gordon	Barbara Guidotti	Dr. Bette Harig
Marvin and Carol Fowler	Patricia L. Geadelmann	Richard J. Gordon	Karen J. Gumbert	Ms. Patricia M. Harig
Richard Fowlkes and Karen Chapman	Sheila Geha and Pamela Menke	Dr. Stanley M. Gordon	Jennifer Gundersen	Jim and Joan Harlow
Elizabeth J. Fozo	Sheila Geha and Pamela Menke	Mr. and Mrs. James W. Gorman	John and Pat Guyette	Malcolm and Sue Harpham
Janet Frane	Doug and Sherry Gentry	Linda L. Gornick	John and Pat Guyette	Don and Judy Harralson
Byron and Shirley Frank	Barbara and Fred George	Chauncey and Allison Goss	Ronald and Marianne Gymer	Eleanor and John Harries
Frank Mangano Foundation	Mr. Stephen H. George	Mr. and Mrs. Porter J. Goss	The Haas Family	Ms. Dorothy P. Harris
Mr. and Mrs. Ralph A. Frankel	Ms. Shirley K. Gerstenberger	Walter L. Gross, Jr., Family Foundation	David and Pamela Hackenberg	Elizabeth Harris
Norman and June Franklin	Carol Gestwicki	Fredric and Barbara Gould	Mrs. George E. Hadwen	Gilbert Harris
Mr. and Mrs. Vernon Frankwich	Mr. and Mrs. Robert Geudtner	Mr. and Mrs. William O. Grabe	Laurie and Steve Hafener	Mr. and Mrs. Richard M. Harris
Ms. Susan K. Fravel	Dittmar and Dorothea Geuthner	Dr. and Mrs. Michael I. Grady	Jean R. Haffenreffer	Mr. William P. Harris
John and Jane Fredericks	Marc and Cheryl Giattini	Carolyn N. Graham	H. Pharr and Virginie H. Brightman	Brenda and Marty Harrity
Ned and Barbara Freeman	Dr. Joseph Giattini	Mr. and Mrs. George E. Graham	Mr. and Mrs. George Hagerman	Mr. and Mrs. Charles C. Hart
Ms. Roni J. Freer	Mr. and Mrs. Ron Gibson	Jack and Martha Graham	Henry H. Hagerman	Helen C. Hartfiel
Charlie Frese	Mrs. Jane S. Gieryc	Mr. and Mrs. James B. Graham	Mr. and Mrs. Virgil James Haggart	Connor Heslin Hartigan
Mr. and Mrs. John H. Freund	Harris and Sondra Gilbert	Thomas Graham and Amy Solek-Graham	Donna Casella and Larry Hahn	Mr. Thomas S. Hartman
Mr. and Mrs. Norman L. Frey	Dr. and Mrs. Harlan R. Giles	Steve and Shade Grahling	Dr. and Mrs. Mahmood A. Hai	Don and Laurie Hartshorn
Mr. and Mrs. Jeffrey E. Frick	Tom and Mary Ann Gilhooley	Grainick Foundation, Inc.	Diane Haida-Johnson	Ms. Rebecca Hartwig
Mrs. Nina Fricke	Bob and Ann Gillespie	Mr. Ira Grasgreen	Charles and Carolyn Haines	James and Kristin Harvey
John and Pam Fridlington	Norma Gillespie	Shirlene H. Grasgreen	George and Emily Haines	John and Linda Harvey
Lynn Friedlander	Mrs. Carol A. Gillette	Dick and Betty Graut	Allan and Elise Hall	Paul and Ellen Harvey
Mr. and Mrs. John Friedlund	Teague Gilliland	Edward and Kay Gray	Jim Hall and Associates/ VIP Realty	Larry Haugh
Martin and Beth Friedman	Tom and Beth Gillis	Genny and Bill Gray	Mr. and Mrs. Stephen Hall	Roland and Anja Hauser
Dr. and Mrs. Bill R. Fulk	Maureen and Andy Ginipro	Connie Grayson	Mr. Walter Hall	Mr. and Mrs. Peter O. Hausmann
Allan and Judy Fulkerson	Bob Gisvold	James and Mary Graziani	Neal and Sherry Halleran	Mrs. David Haweeli
Michael and Suzanne Fuller	Rod and Barb Glaeser	Kathleen and John Green	Mr. and Mrs. John F. Halligan	Dr. and Mrs. William M. Haynes
Mr. Barry Fulmer	Deb Gleason	Matthew Daniel Green	Ms. Joyce V. Hamlin	Jeff Hayward and Madeline Etkin
Fund For Animals, Inc.	Harry and Mona Gleitz	Green Foundation	Mrs. Helen Hammes	Ellinor Hayward
Steve and Sandy Gadomski	The Glenmede Trust Company	Susan M. Greenberg	Larkin Hammond	Rad Hazen and Betsy Haesemeyer
David and Judy Gaggin	Mardi and Bill Glenn	Greenheck Family	Ms. Joan E. Handler and Mr. C. William Harman	Dr. G. Adair Heath
George and Doris Gagliardi	Mr. and Mrs. Henry W. Glissman	Mr. and Mrs. Steven V. Greenstein	Bill and Nancy Hanger	Ann B. Heck
Gilbert K. Gailius	Mary C. Glodt	Gail and Jim Greenwood	Mrs. Jane Hanger	Mr. and Mrs. Jeff Hedden, Jr.
Andrea and Phil Gainer	Mrs. Karen Goellner	Mr. and Mrs. Bill Greggs	Mrs. Jane Hanks	Lesley Heffron
Walter and Methel Gale	John and Eula Goetzinger	Wade and Ann Gregory	James P. and Madelyn V. Hanlon	Jim and Caryl Heid
Tom Gallery and Shelley Lavey	Milton and Lois Goldberg	Roger Grelle	Arthur and Susan Hanna	Hanns and Christel Heidecker
Mr. and Mrs. Joseph V. Galluzzo	Drs. Anne and Ron Golden	Carol Gresham	Gloria and Michael Hannan	Edwin and Holly Jean Heidelberger
Ms. Ruth Gamble	Inge and Harvey Golden	Elizabeth Gresham	Ed and Sharon Hannon	Edward and Janet Heinrich
Gannett Foundation, Inc. Matching Gift Center	Anne Golden	Glen and Phyllis Gresham	Patricia C. Hanrahan	Mr. and Mrs. Jonathan C. Heinrich
Gannett Newspaper	Dr. Joel P. Goldfarb	John Grey Painting	Richard and Barbara Hansen	Ms. Sally-Jane Heit
Lorraine Gannon	Sue Goldman	Melissa Gribble	Dr. and Mrs. Thomas Hansen	William and Marilyn Helfers
Richard J. Garcia	Stanley and Joyce Goldmann	Stephen Griffey	Al and Sally Hanser	Mr. and Mrs. Wesley Hellegers
Bill and Marsha Gardner	Gary M. Goldstein	Buzz and Mary Jo Griffin	Mr. and Mrs. Dale S. Hanson	Mr. and Mrs. James G. Hellmuth
Tim and Carol Gardner	Charles and Connie Golson			

Edward Hemmelgarn and Jan Hammond	William J. Hoffner & Martha J. Mulloy	Mr. and Mrs. Donald Hunter Sam and Polly Huntington	Jensen's Twin Palm Resort Marina Mark and Janice Jernigan	Glen and Chris Kaufman Lois Weil Kaufman
Ms. Georgia N. Hemphill	David and Catherine Hogan	Mrs. Peggy Hupfeldt	Alice and Mike Jeromin	Mr. and Mrs. John S. Kavalunas
Mr. and Mrs. James C. Hendershot	Elaine and G. Hogan	Dr. Maland C. Hurr	Carolyn and Karl Johns	William W. and Jane C. Keefer
Mr. and Mrs. Eugene L. Henderson	Mr. Donald Hogg	Needham and Mary Lou Hurst	David L. Johnson and Anne Nobles	Mr. Michael T. Keilty
Henderson, Franklin, Starnes & Holt, P.S.	Mr. and Mrs. Robert Holder	Caleb Hurr	Alison B. Johnson	Mrs. David M. Keiser
Walt Hendry and Janet Strickland	Dr. and Mrs. Lawrence Hoken	Jeff and Linda Huttenburg	Bill and Chris Johnson	William and Heidi Kelleher
Marjorie Henn	Mrs. Harriett M. Holladay	Dr. John S. Hutton & Ms. Sandra S. Gross	Denise Johnson	Haley and Renee Keller
Richard A. Henry	Natalie Hollis	Drew and Maryann Huzar	Mr. and Mrs. Howard W. Johnson	Dr. and Mrs. Thomas Keller
John Henshaw	Audrey and Gerald Holman	Mr. Jim Hynden	Dr. and Mrs. Irving S. Johnson	Cheryl Kelley
Cheri Herbert	Barbel Holtmann	Rick and Lori Hypes	Liddy Johnson	Deborah Kelley
Barbara Lensing and Peter Herlich	Mr. and Mrs. Donald B. Holway	IBM Corporation - Matching Grants Program	Louise Malia Johnson	William and Patricia Kelley
David and Lynn Herlinger	Ms. Jeannine L. Holway	Mr. Terence M. Igo and Ms. Cristin D. Bishara	Nancy B. Johnson	Ms. Christine M. Kelly
The Herman Fund	Mr. and Mrs. Richard S. Holway	Fred Immermann	Nita J. Johnson	Greg and Donna Kelly
James Hermes	Linda Holzwarth	Indigo Press, LC	Mr. Thomas R. Johnson	Joan and Bill Kelly
Jill Herold and Family	Jim and Marilyn Hooper	Rev. and Mrs. Robert Ingraham	Win and Rita Johnson	Mrs. Joan R. Kelly
Darryck and Inez Hesketh	Ms. Linda Hooper	International Osprey Foundation, Inc.	Bruce Johnston	Mr. Michael F. Kelly
Mr. and Mrs. Jack Hessburg	Chuck Hoover	Dr. and Mrs. George E. Irwin, Jr.	Campbell and Barbara Johnstone	William and Joan Kelly
James and Penny Hetmanek	Herb and Barbara Hoover	Ms. Anne H. Isbister	Dr. and Mrs. Harold E. Johnstone	Stephen G. Kelsch
Mrs. Jean A. Heuer	Ms. Jane H. Hope	Island Cinema	Barbara and Denny Jones	Jack and Sally Kennedy
Molly Kay Heuer	Michael Hoppgood	Island Inn	Dale and Phil Jones	Philip H. Kenney and Victoria S. Anthony
William E. Heyd and Carolyn Kuester	Dr. and Mrs. Stanley Hoppenfeld	Andrew and Terry Jacob	Mr. Dewitt L. Jones, Jr.	Kenoyer Real Estate Corp.
Frank and Patsy Hiatt	Mr. and Mrs. Thomas Hopper	John and Lana Jacobs	Mrs. Dorothy Jones	Lyn B. Kern
Tom and Ellen Hickey	Mr. and Mrs. Dewitt Hornor	Ms. Joyce Jacobs	John F. Jones	Mrs. Maud Kernan
Mr. and Mrs. William A. Hickey	Greg and Joan Hoskins	Deborah Jaeger	Judith A. Jones	Greg and Rebecca Kerns
Ms. Elizabeth Hicks	Mike and Rosie Houk	Stephen and Rita Jaeger	Mr. and Mrs. Sheldon Jones III	Mr. and Mrs. Mark H. Kerschensteiner
Gwenda Hiett-Clements & Len Clements	Howell H. Howard	Kent and Sharon Jager	Ronald and Cynthia Jones	Ms. Sue Kerzisnik
Mr. and Mrs. Charles W. Higgins	Karen Howard	Dick and Mary Jalkut	Lynn R. Jordan	Chuck and Helen Ketteman
George and Judy Hiles	Phil and Karen Howard	Dr. and Mrs. Lawrence R. James	Thomas F. Jordan	Ali and Maureen Keyhani
Mr. and Mrs. Nicholas J. Hilger	Ms. Sally E. Howard	Scott and Diane Jamieson	Jeanne B. Joseph	Mr. Edward Kfoury
Mr. Peter Hilger	Mr. and Mrs. William T. Howard	Janice Michelle Foundation, Inc.	Mr. and Mrs. Dennis Joyce	Nik Khakee
Bill and Tina Hillebrandt	Kevin and Donna Howdeshell	Mary E. Jaqua	Mr. and Mrs. Hewette E. Joyce, Jr.	Mrs. Susan Kidder
Duane Hilsmeier	Walt Howe and Hope Tillman	Mr. and Mrs. Edward Jarot	Ms. Bess Joyner	Mr. Gordon Kiddoo
Doug Hinshaw & Susan Roediger	Janie Howland	Herman and Alaine Jass	Colton Junod	Paul and Katharine Kiefer
Kaila I. Hires	Jeannette K. Howland	Mrs. Joan S. Jay	The Jurasinski Family	Jane and Charlie Kiel
Mr. and Mrs. Robert Hirschman	HRK Foundation	Mr. and Mrs. David L. K. Jeffrey	Ina Claire Jurney	Fran and Harlan Kielling
Mr. and Mrs. Edward G. Hitchcock	Jane Hudson and Dan Cornila	Mr. and Mrs. Robert H. Jeffrey	Dr. and Mrs. Arthur W. Kaemmer	Pat Kiely
John and Carolyn Talbot Hoagland	Ms. Linda A. Huffington	The Jeffrey Family Fund of the Community Foundation of New Jersey	Mr. Karl Kaimer	The Kienholz Kids
Ms. Shirley S. Hoch	David and Diana Huggin	Lynn D. Jenness and Donald B Hendrich	Mr. and Mrs. Wallace M. Kain	Mr. and Mrs. Edwin A. Kiernan
Mr. William V. Hoch and Ms. Denise A. Chicoine	Chris Hughes and Sherrie Hender	Linda and Greg Jennings	Doris J. Kaiser	Mr. and Mrs. Peter W. Kilborn
Tanya Hochschild	William and Laurel Hughes	Mr. and Mrs. Martin Jennings, III	Jonah Kaiser	Richard and Susan Kile
Jim and Marcia Hock	Harry Huizenga	Ms. Jane L. Jensen	Mr. Randall R. Kaiser	Bobbie and Warren Kimber
Mr. Roger Hockman	Peg and Dick Huilt	Jensen's On The Gulf	Mr. and Mrs. Walter E. Kalberer	Drs. John and Wendy Kindig
Mrs. Margaret Porter Hoel	Mr. and Mrs. Guy W. Hull, II		Parviz and Helen Kambin	Christine King
Kathy Hoelting	Gordon C. Hullar and Doris Holzheimer		Carol Kane	Dick and Reta King
Lenora Hoffmann	Dr. and Mrs. Mark W. Hullstrung		Marilyn and Stan Kane	Harry and Lynda King
Richard and Jean Hoffman	Mr. and Mrs. Elmer C. Humes		Irene Kaplan	Ms. Mona L. King
	Robert and Barbara Hummert		Kara Foundation	Mr. Steven G. King
	Mr. and Mrs. H. H. Humphrey, Jr.		Olivia Maynard and Olof Karlstrom	Theresa and Harold King
	Brett and Terry Hunter		George and Barbara Karr	Kings Crown Condominium
			Duane and Carol Katzman	

David and Barbara Kingsbury	Mark and Pam Kroll Family	Dr. Clifford G. Leach	Ms. Nancy Loduca	John A. MacLennan
Dr. and Mrs. Wendell Kingsolver	Ms. Anne Krueger	LEAF, LTD	Steve and Joanie Loe	Nancy MacPhee
Robin and Mark Kirk	Dick and Gerry Kruse	Mr. Edgar M. Lear	Mr. and Mrs. Richard Loechl	Macy's, Inc. - Matching Gifts Program
Judith Kirkpatrick	Mr. and Mrs. Bernard S. Kubale	Mr. Ron Leavitt	Mr. Robert K. Loflin	Jack and Victoria Madaras
Juilanne Kirkpatrick	Mrs. Annaliese R. Kuehn	Mr. and Mrs. Charles LeBuff	Ms. Linda L. Logan	John and Marjorie Madden
Jonathan Kiser	Jim and Sophia Kuharich	Nancy C. Lefever	Mary Ann L. Loh	Judith C. Maddock
Dr. and Mrs. William S. Kiser	Fred and Anne Kuhnén	Caroline M. LeGette	Ms. Constance B. Lohr	Mr. and Mrs. Bruce P. Madison
Ruth E. Kitchin	Alberta Kulic	Mr. and Mrs. Charles E. LeGette	Joseph and Julia Lombardi	Mr. and Mrs. George H. Madison
Ben and Mary Klaus	Norbert and Aud Kunz	Ms. Eleanor R. Lemaire	Gary and Margot Long	William L. Madsen
Mr. and Mrs. M. Barr Klaus	Barbara R. Kurland	Harriet and William Lembeck	Mr. and Mrs. Daniel Long	Mr. and Mrs. Mark Magnotto
Tom and Shellee Klausmeier	Ed and Barbara Kusek	Chip and Sheryl Lesch	Mrs. Leonard Long	Patrick and Robin Magoon
Mr. Myron W. Klein	Mr. and Mrs. Wayne La Fave	Alan and Edina Lessack	George Loomis and Diane Shelgren	Mr. and Mrs. Bernard F. Maher
Hartley and Adair Kleinberg	Deborah and John La Gorce	Mr. Frederick Lesser	Jim and Ann Loomis	Mr. and Mrs. Douglas L. Mahrer
Dr. and Mrs. Frank H. Klepacki	Patricia La Plante	Darla and Joe Letourneau	Nick and Diane Lopardo	Micky and Jill Maita
Mrs. Gloria A. Klimek	Mr. and Mrs. Philip Lacovara	Mrs. Virginia Letourneau	Karen and Bob Lord	Bryan and Patti Majewski
Kenneth M. and Renee L. Klivickis	Dennis and Shari LaFrance	Mrs. Ruthi Levering	Pentha Lord	Doug and Jeanne Mallon
Brian Klocke	Tom and Nancy Lagan	Ms. Patricia L. LeVesque	James and Paulette Lotstein	Mike and Claire Mallon
Marilyn Kloosterman	Don and Sue Lair	Julie Tan and Roger Levey	Maureen D. Loughney	Mr. and Mrs. Thomas J. Malott
Frank B. Knapke, Jr.	Ms. Iona J. Lakus	Ann and Alan Levinsohn	Mrs. Frederick R. Louis	Mammel Family Foundation
Mary C. Knight	Robert and Helen Lambiase	Arnold and Marilyn Levinson	Ms. Judith S. Louis	Marlene Mandel
Mr. and Mrs. Newell S. Knight, Jr.	Mr. and Mrs. Charles LaMothe	Richard and Patricia Levinson	Ms. Carol Louttit	Graig and Ellen Mandel
Ms. Roberta W. Knight	Mr. and Mrs. William E. LaMothe	Beverly Levy	Alcinda M. Lovett	Frank and Mary Lee Mann
Al and Bonnie Koch	Mr. and Mrs. Joseph M. LaMotta	David and Judi Lewis	Mr. and Mrs. Marcus C. Low, Jr.	Noel Mann
Dr. and Mrs. Ira J. Kodner	LaMotte Family Foundation	Mrs. Mary Lou Lewis	David and Kelly Lowden	Patrick J. Manning
Bob and Brenda Kohler	Peg Lancioni	Mr. and Mrs. Richard T. Lewis	Rick Lowman and Melanie Files	Dr. and Mrs. Deane C. Manolis
Jack and Norma Kohn	Tim and Liz Landon	Liberty Giving Tree Inc.	Mrs. Goodrich Lowry	Ms. Constance Mara
Josephine L. Kohn	Mr. Samuel J. Landry	Sally Lichtenstein	Bernard and Beverly Lubetkin	LaRaw and Kit Maran
Max and Jan Koletzke	Mr. and Mrs. Robert L. Lane	Charles M. Liddle, III	Bill and Willa Lucarelli	Mariel Foundation
Jackie Kolk	Judy and Al Lane	Marina Liem and Alex Cannon	Mr. and Mrs. David Lucas	Mariner Properties Development, Inc.
David and Susan Kolson	Mr. and Mrs. Charles E. Lane III	Lifeline Designs	Matthew Lucas	Dr. and Mrs. William W. Mark, Jr.
Sam Koltinsky	Vincent Lang	Lennart and Ann Lindberg	Raymond and Mary Jo Luebbers	Ellis Robinson and Dick Mark
Richard and Barbara Konz	Ute I. Lang	Ellen and Erick Lindblad	Mr. and Mrs. Joseph Lunghamer	The Markowitz Family
Ted and Grace Anne Koppel	Mr. and Mrs. Arnold G. Langbo	Bob and Jeanne Lindman	Mrs. Edgar Lupfer	Phillip and Susie Marks
Mrs. Christine A. Korman	Don and Ann Langefeld	Dorris M. Lindquist	Brian Lynch and Laura E. Bothe	Mr. and Mrs. Peter H. Markusch
Mr. and Mrs. Don Korn	Ingeborg C. Langer	Mark Lindsay	Frank and Kathy Lynch	Mallory K. Marshall and
The Kosloske Family	Carolyn Gray and Stuart Langton	Bob and Avice Lindstrom	Frederick and Deborah Lynch	R. F. Haffenreffer IV
Mr. and Mrs. Christopher D. Koss	Mrs. Mary B. Lankford	Mr. and Mrs. Calvin C. Linnemann	Gail Lynch	Dennis and Betty Martin
Harry and Kandee Kotses	Mr. and Mrs. Edward F. Lannigan	Linda and Nick Linsmayer	Gale and Jim Lynch	Mr. Edward C. Martin
Peter and Jane Koury	Mr. Paul W. Lantz	Mr. and Mrs. Erik Linthorst	Sally M. Lynch and Francis C. Lynch	Elinor Ruth Martin
Mr. Theodore G. Koven	Michael Lapko	Donald and Mary Ann Linton	Robert and Nancy Lynd	George and Miriam Martin
Patrick Kraenzle	Mr. and Mrs. Bill Larson	Wade and Heather Lippert	Steven and Sharon Lynn	Foundation
Mrs. Dorothea K. Kraft	Barbara A. Lasky	Matthew and Rebecca Lipschutz	Dr. and Mrs. James D. MacCallum	Glenn and Barbara Martin
Mr. and Mrs. Rick Kraft	William Lasky	Belle M. Lipsky	Don J. MacFarlane	Pat L. Martin
John and Linda Kramer	Richard and Mollie Lassy	John Liptak	Edith MacGuire	Mrs. Wilma Martin
Jean H. Kramer	Charlotte Lattof	Marta Liroff	Mack Avenue	Malcolm Martini
Gary and Carol Kreml	Daniel and Jane Lautermilch	Barry and Francine Litofsky	Charles G. Mackall Jr.	Mrs. Joan Martyn
Ms. Mary Louise Krise	Jim and Mary LaVelle	Ted Littler	Mr. and Mrs. David O. MacKenzie	Sarah and William Marx
Ms. Robin C. Krivanek	Mr. and Mrs. William J. Lawless, Jr.	Mr. and Mrs. John Liu	Mr. and Mrs. W. J. MacKenzie	Mr. and Mrs. Peter Masalsky
Joyce and Charles Krivenko	Lawson Family Foundation	Bob and Carol Lloyd	John MacKinnon	Jane and Arthur Mason
Jim and Darlene Kroencke	Ms. Anne P. Layman	Susan Lloyd	Ms. Judy MacKinnon	Mr. John T. Mason
Sarah Kroeschell	Linda Layton	Mrs. Stephanie Locker	Marcia T. MacKinnon	Mr. and Mrs. Max W. Mason

Pete and Kris Massat	The McGraw-Hill Companies-	Mr. and Mrs. Stephen M. Mihalý	Mr. and Mrs. Robert J. Moosy	Dr. and Mrs. Edward T. Negley
Gene and Linda Massey	Corporate Contributions	Barbara S. Miklavcic	Ann L. Moran	Dr. and Mrs. Wilbur A. Neil
Ms. Candace Mather	Bill and Donna McGraw	George and Peggy Milbourn	Mr. and Mrs. Lawrence Moran	Leroy and Diane Neitzel
Ruth Matney	Doris McHale	Eric Milbrandt, Ph.D.	Drs. Riffat and Margaret Morgan	Dr. David W. Nelson and Susan Stuart
Mr. Peter F. Matthews	Mr. and Mrs. Tom McKenny	Paul J. Milbury	Ann N. Morgan	Gerald and Barbara Nelson
George C. Matthiessen	Mrs. June McKinnell	Mr. and Mrs. Wayne E. Milewski	Mrs. Charle Morgan	Jim and Mary Nelson
Mr. and Mrs. Peter Matthiessen	Mr. and Mrs. Gary McKnight	Mr. and Mrs. Daniel M. Millard	John and Sheilah Morley	Karen Nelson
Lisa Matz	Deborah McKnight	Robert and Susan Mille	Dr. and Mrs. Robert S. Morris	Rick and Darlene Nelson
Joan L. Maupin	H. Michael and Mary McLaughlin	Anthony Miller	Wayne and Nancy Morrison	Mr. Thomas P. Nelson
Nancy and Bob Maupin	Jennifer P. McLean	Mrs. Billie Lou Miller	Edward and Billie J. Morrow	Sharon Lavin and Joe Neuman
Mr. and Mrs. Donald Maurer	Mr. Edward McManus	Mr. and Mrs. David Miller	Frank and Carol Morsani	Carl Neumann
Mr. and Mrs. Robert W. Maurer	Doris J. McNabb	Dr. and Mrs. Edward Miller	Ms. Diana F. Morse	Mr. and Mrs. Patrick Nevins
Laura Mauro	Walt and Darst McNairy	Mr. and Mrs. Frederick C. Miller	Mr. and Mrs. F.W. Morse	Margaret Newell
Dr. and Mrs. S.R. Maxeiner, Jr.	Mr. and Mrs. Pat McNeilus	Gary and Joyce Miller	John and Kay Morse	Evelyn B. Newell
James D. Maxwell	Patricia McNulty	Jim and Hannah Miller	Ballard and Isabel Morton	Drs. John and Gwendolynn Newman
Richard G. Maybee	Dave and Patti McRae	Mr. and Mrs. Harold Miller	Gates and Barbara Moss	Lisa N. Newmeyer-Cochrane
Howard and Judith Mayer	Linda M. McVeigh	Jenny and Heath Miller	Rebecca K. Moss	Mrs. Edna S. Newnan
Daran Mayer	Edward and Patricia Mead	Joseph and Linda Miller	Mr. and Mrs. Seward H. Mott	Donald and Susan Newton
Mr. Ernest R. Mayes	Means To An End LLC	Linda Miller	Jim and Mari Moye	Mr. and Mrs. John K. Newton
Gordon and Lynn Mayes	Marge and Joe Meek	Mike and Mary Miller	Ms. Jane A. Moyer	Jack and Peggy Nichols
Stephen and Jill Mayes	Peter and Nancy Meekin	Norman and Hermie Miller	Mr. and Mrs. Robert J. Moyle	Dr. and Mrs. Norman J. Nichols
Neil and Linda Mays	Thomas and Marilyn Mehalic	Drs. Paul and Mandy Miller	Maurice and Geraldine Much	Jon and Stephanie Nichols
Mr. Peter Mazur	Dana Mehlig	Paul and Margaret Miller	Harry and Genie Mueller	Susan Nichols
Mr. and Mrs. Anthony J. Mazzone	Gail and Carl Meier	Mr. and Mrs. Richard R. Miller	Ernest and Lisette Muhlemann	Karen Nicoletti
Mr. Patrick S. McArdle	Sarah Meleney	Stephan and Kim Miller	Regina M. Mullen	Randall and Marilyn Niehoff
Mr. and Mrs. Robert J. McBride	Gary Meltz	Dr. Patricia A. Mills	Carol and Thomas Mullin	Mr. and Mrs. David Nimick
John and Kathy McCabe	Mr. Jerald H. Melum	Kevin and Mary Beth Mills	Mr. and Mrs. Michael C. Mullins	Audrey J. Niquette
Ms. Gloria M. McCarthy	Ms. Leslie A. Melzer	Mr. William A. Mills	Mr. and Mrs. William E. Mullins	Cliff and Irene Nolan
Dr. and Mrs. Thomas E. McCarthy	Michael and Marita Menard	Patti S. Mink	Joanne M. Muncey	Norcross Wildlife Foundation
Mr. and Mrs. William E. McCarthy	Ron Mendrick and Katherine A. Iaculli	Leonard and Renee Minsky	John and Joann Munn	John and Lucy Nordahl
Scott McCatherin	Carlos and Alessandra Menendez	Mr. and Mrs. Stuart E. Minsky	Roberto Munoz and Melinda Roy	Fred and Marj J. Nordstrom
Roy and Judith McCloskey	Jack and Engrid Meng	Ms. Anne Mitchell	Jim and Bev Munson	Mary Lou Norris
Mr. and Mrs. Charles G. McClure	Mr. Eugene Mennen	Chuck and Waldy Mitchell	John and Cris Munz	Michael and Kory Norris
Barbara B. McClure	Ms. Nancy Merel	Fred Mitchell	Mr. and Mrs. Michael Munz-Jones	Mr. and Mrs. Thomas H. Norris
Mrs. Carol B. McCord	Mrs. Laurie L. Merel	John and Carol Mitchell	Ms. Carolyn M. Murphey	Northern Trust Bank Of Florida
Walter and Mary Lou McCormick	Scott C. Merrell	Margarethe Thye-Miville	Mr. and Mrs. Andrew L. Murphy	Robert and Pamela Norton
Orgain and Jennifer McCullough	Sue and Frederic Merrick	Dr. and Mrs. Darayes Moberd	Jack and Beverly Murphy	Mr. and Mrs. Gary R. Nottelmann
Mr. J. C. McCullough, II	Bruce Merrill	Georgeanne Mockler	John H. Murphy	Vince and Laurie Nourse
Susan and Tom McCully	Merrill Lynch, Private Client Group	Mrs. Elizabeth D. Mody	Priscilla Murphy Realty, Inc.	Don Novotny and Kathy Howlett
Dean and Nancy McCumber	Dr. Doris H. Merritt	Ann and Dan Moeder	Daniel and Susan Murphy	Amy E. Nowacki
Terrence and Sue Ann McDermott	Carol Messenger	Dr. William J. Moershel	J. Garvin and Nicole Murtha	Hans and Rose Nybro
Bob and Kay McDonald	Horst and Sandra Metz	Keith Moffat	Lisa Murty	Edward and Patricia Oakes
Ralph McDonald	Marilu B. Meyer	Dr. and Mrs. Richard S. Moll	Thomas R. Mustachio	Mr. Joseph D. O'Brien, Jr.
Zeke McDonald	Mr. and Mrs. Warrin Meyers	Mr. and Mrs. Attila H. Molnar	Terry and Sally Myers	Kevin W. O'Brien
Ms. Ann A. McDonnell	Mrs. Elizabeth Mezera	Mr. and Mrs. Kenneth B. Monahan	Mr. Albert F. Nagel	Lyn O'Brien
Ms. Nancy McDowell	Mr. and Mrs. Frank J. Middendorf	Fred and Marie Monick	Terry and Barbara Nagle	Maureen O'Brien
Mr. Joseph McEwen	Middendorf Family Foundation	Mr. Graham C. Monk	Joyce Nalewajk	The O'Connor Foundation
Dale and Diane McGinley	Midpoint Bingo Charities Account	Massimo Montanari and	Robert and Elizabeth Nanovic	Mr. and Mrs. William B. O'Connor
Mr. and Mrs. Burton J. McGlynn	Mid-West Terminal Warehouse	Marianne Bargiotti	Edward J. Natoniowski	Mr. and Mrs. D. P. O'Daniel
Mrs. Ann W. McGovern	Company	Mr. and Mrs. S. Montclare	Richard and Anna Naumovich	Nancy C. Oden
Andrew McGowan	Gianni and Gail Migliorini	Bob Moore and Ariel Hoover	Lannois F. Neely	Mr. and Mrs. Bruce G. Odlaug

Deirdre and Kevin O'Donnell
 Mr. and Mrs. John F. O'Farrell
 Ms. Gloria O'Flannery
 Marie Ogden
 Ms. Judith R. O'Hair-Regan
 Mr. and Mrs. Kenneth O'Kelley
 and Family
 Pia Olafson
 Bill and Jeannie Olinger
 Don and Sandy Oliver
 Don Olsen
 Drs. Jim L. and Mary Lee M. Olson
 Rosemary Olson
 Phil and Diane Olsson
 Gregory and Claire O'Neill
 Mr. and Mrs. Raymond G. O'Neill
 Tim and Julie O'Neill
 Mr. and Mrs. John R. Opel
 Mr. and Mrs. Richard L. Ordeman
 Mrs. Corinne D. O'Reilly
 Mr. and Mrs. Ralph A. Orlandi
 Toni and Jim Ory
 Ed and Antonia Osgood
 Mr. Daniel O'Shea
 Mr. John Oster, Jr.
 Buzz Osterbusch
 Patrick O'Sullivan
 Maxine Otis
 Gary and Ann Otten
 Mrs. Renee Overholser
 G. Scott Owen
 Mr. Bob Owens
 Ms. Rae Ann Owens
 Mr. Nat P. Ozmon
 Martin and Enid Packard
 Mr. and Mrs. Edward Packell
 Mr. Paul G. Paglia and
 Mr. John P. Claypoole
 Mr. Robert B. Palmer
 William and Janet Palmer
 Weston H. Palmer
 Drs. Ronald and Kristin Pancner
 Christine Pandolfe and
 Linda Pearson
 Marian and Bebe Panepinto
 Dan and Pat Panshin
 Chuck and Judith Papier
 Mr. Peter L. Pappas
 Gregory P. Para
 Mr. Alvin L. Park
 George and Virginia Parker

George and Rosalind Parkinson
 Clint and Sally Parsons
 Doug and Mary Lynn Parsons
 Frank and Nancy Parsons
 Foundation Fund, on behalf of
 Douglas and Mary Lynn Parsons
 Mr. John R. Pascall
 Dr. and Mrs. Gopal Pati
 Mr. Doug Patinkin
 Hal and June Patinkin
 Ed and Sue Patrick
 Harriet S. Patrick
 Samuel and Suzanne Patterson
 Lynn Patterson
 Harriet Pattison
 Mrs. Mary Pattison
 Mrs. Robyn Patton
 Robert and Mary Ellen Paulson
 Stephanie and Harold Payson
 Patricia Peck
 Pepsico Foundation
 Daniel and Geraldine Perkins
 Lynn L. Perkins
 Peter and Mary Perkins
 Roy and Jacqueline Perry
 Blair Wellensiek and Karl Peters
 Mr. and Mrs. Kurt Peters
 Dale and Jeri Peterson
 Ms. Jane Peterson in honor of
 Dan Peterson
 Bill and Jane Pettibone
 Murray and Ramona Peyton
 Thomas Pfeifer and Judy Brown
 Pfeifer Realty Group
 Eric and Mary Ellen Pfeifer
 Elizabeth M. Pfriend
 Mr. and Mrs. Tad Phillips
 James Phillips and Wendy Stewart
 George and Katrin Phocas
 Mr. and Mrs. Thomas F. Pick
 Kitty Picken
 Jane and Sidney Picker, Jr.
 Mr. and Mrs. Peter Pierce
 Cathy and Larry Piersol
 Mr. and Mrs. James C. Pigott
 Mr. and Mrs. Kenneth E. Pike
 Larry and Sandra Pike
 Jean and John Pilon
 Dr. and Mrs. Ronald S. Pindel
 Mr. Thomas A. Piraino and
 Mrs. Barbara C. McWilliams

Ann Marie Pittman
 Dr. Ruth Ann Plate
 Ned Platner
 Richard Plummer
 John and Anita Poling
 Mr. and Mrs. Dale E. Polmateer
 Wayne and Martha Ponader
 Ms. Lucy Pongetti
 Guy and Joan Pontius
 Marian M. Pool
 Tom and Cynthia Poole
 Jerry and Rita Popson
 Lee and Lisa Portnoff
 Clair and Bev Postmus
 Paul and Barbara Powers
 Mr. and Mrs. Rick Powers
 Louis and Sandra Pradt
 Richard and Nancy Preservati
 Trudie Prevatt
 John and Martha Price
 Ms. Vanessa L. Price
 Dr. Gregory Probst
 Ed Probst and Lisa Mauer
 Stewart and Bunny Proctor
 Mr. and Mrs. William R. Proctor
 Prudential Foundation Matching Gifts
 Mr. and Mrs. Phil Ptacek
 Publix Super Market Charities
 Mr. and Mrs. William W. Pugh
 Mrs. Catherine K. Pund
 Mr. John D. Purdy
 Philip and Roberta Puschel
 Ms. Kay L. Putney
 Nathalie and Dick Pyle
 Katrinka Quirk
 Michael and Cathy Raab
 Ms. Marjorie Rabenold
 Bobbie Radcliff
 Kathleen Radler
 Drs. John G. Raffensperger and
 Susan Lark
 Tom and Karen Ragatz
 Mr. and Mrs. F. William Rahe
 Lawrence and Elaine Raia
 Charles and Jane Ramseth
 Dr. and Mrs. Robert K. Ramsey
 Edgar and Joyce Rand
 Mr. and Mrs. David P. Ranford
 Dr. and Mrs. Richard L. Ranieri
 Bill and Jeanne Rankin
 Dr. and Mrs. George Rapp

Lou Rapp
 Mr. Oscar Rattenborg
 Joseph and Trudy Rauh
 James and Gail Rawcliffe
 Mr. Robert E. Rawlins
 Mrs. Polly Ray
 Richard and Lani Ream
 Mr. and Mrs. William J. Recker
 Lanny Reddick
 Chris and Kim Redfern
 Mr. and Mrs. James S. Reed
 Sally Reed
 Tom and Gladys Reed
 Christina Rees
 Mrs. Virginia T. Reeves
 John and Katherine Reid
 William Reill and Allen White
 Bob and Kristin Reilly
 Mr. Thomas W. Reimer
 Ken and Sue Reinhardt
 Mr. and Mrs. Thomas C. Reinhart
 Bud Reinhold and Eileen Kehoe
 Dale Reiss and Jerry King
 Emily Reitz
 Mark and Kimberly Reller
 Mr. and Mrs. Brad Rendall
 Mr. Lee A. Rendall
 Mr. and Mrs. Jack B. Rendall III
 Carmine and Eleanor Rende
 Mr. Gary L. Rengers
 Robin O. Rentsch
 Karl and Gloria Renz
 Mr. and Mrs. Peter B. Reuling
 Hernan and Dolores Reyes
 D. Michael Reymann
 Kate and Josh Reynolds
 Mr. and Mrs. Lamson Rheinfrank, Jr.
 Mrs. Charline M. Rice
 Cynthia Rice
 Joyce and Don Rice
 A. Jackson and Nancy Rich
 Dave and Sue Richard
 Mr. and Mrs. Arthur Richard
 Ovid and Shirley Richards
 Mr. David Richardson
 Mrs. Derek Richardson
 Mrs. Dorothy J. Richardson
 Mr. Franklin Richardson
 Mrs. William Richardson
 Mrs. Judith C. Richmond
 Tom and Beth Rickart

Laura Riddle
 Lynn and Ed Riddlehoover
 Mrs. Lynne M. Rieger
 Allen and Pat Rieselbach
 Dr. Elizabeth B. Riggs
 Bob and Sandra Rightmire
 Charles and Nancy Riley
 Mr. William Riley
 Mr. David Mintz and Ms. Elisa Riordan
 Robert Rippe
 Mr. Allen T. Risher
 Mark and Becky Ristow
 Mr. and Mrs. Charles L. Ritchie, Jr.
 Dr. and Mrs. Robert Ritchlin
 Roy and Kristin Ritts
 RWJ Foundation
 Chip and Nancy Roach
 Mr. and Mrs. Peter M. Roberge
 Jack and Stefanie Roberts
 Todd and Karen Roberts
 Mrs. Jean Robertson
 Bill and Ginny Robinson
 Mr. and Mrs. Kenneth B. Robinson
 Mr. Paul N. Robinson
 David Robson and Katy McKenney
 Ms. Jennifer Roche
 Doris S. Rodgers
 Karl and Ann Rodman
 Robbie and Geoffrey Roepstorff
 Mr. and Mrs. Kenneth Roessler
 Bruce and Joan Rogers
 Doris and Lynn Rogers
 Hiram Rogers and Jean Gauger
 Mrs. Rose Rogers
 Scott and Marianne Rogers
 Stanley and Pat Rogers
 Margaret A. Rogstad
 Greg Rohlf and Gesine Gerhard
 David and Madelaine Rohn
 Mr. and Mrs. Don Rolley
 Peter Ronald
 Richard and Bebe Roosa
 John and Janet Rosborough
 Sybil and Irvin Rosen
 Carol and Bill Rosenberg
 Ms. Susan M. Rosenberg
 Peter and Peggy Rosenblum
 June Rosner and Russ Bilgore
 David and Victoria Ross
 Ross Infrastructure, LLC
 Kim and Joyce Ross

Dr. and Mrs. Richard S. Ross
 Mr. Barry A. Roth
 Eric Roth
 Mr. and Mrs. Jeffrey D. Roth
 Nick Roth
 Mr. and Mrs. Robert H. Roth
 Mr. and Mrs. Paul F. Roth
 Mr. and Mrs. Paul R. Roth
 Rachael Roth
 Tom and Carol Rothman
 Alexander W. Roulston
 Mrs. Libby Rouse
 Rena Rowan Foundation
 Kevin and Doreen Ruane
 Edward Rubel
 Mr. and Mrs. David Rubien
 Herb and Judy Rubin
 Andrew and Jennifer Rubino
 Charles R. Rubright
 Mr. and Mrs. Frederick Rudolph, Jr.
 Mr. and Mrs. Francis J. Rue, Jr.
 Jane M. Ruffin
 Joanne Rukavina
 Charles and Nancy Runta
 Daniel and Sharon Ruppert
 Mr. and Mrs. Richard L. Russell
 Mr. and Mrs. Kenneth E. Ryan
 Nicole Ryan
 Mr. and Mrs. John P. Ryan
 Dr. and Mrs. Frederick Ryckman
 Martha J. Ryckman
 S.W. Florida Community Foundation
 Maureen and Gary Saage
 Sabety Family Foundation
 Allan and Sally Sacks
 Ms. Sheila Sadighi
 Thomas and Elizabeth Sadlowski
 Klaus and Mary Ann Saegebarth
 Dr. and Mrs. Marcel Saghir
 Kurt Saile
 Saks Fifth Avenue
 Mrs. Christina Salerno
 Reynolds Salerno
 Drs. Richard and Christina Salerno
 Dr. and Mrs. William Salt II
 John Salus
 Stan and Melinda Saminski
 Jack and Leslie Samler
 Cheryl and Jim Samples
 John and Nancy Sampson
 Steve and Joan Mohr Samuels

Cheryl M. Samuels
 San-Cap Islands Real Estate Guide
 Stephen and Wendy Sanders
 Mrs. Katharine D. Sanger
 Sanibel Air Conditioning, Inc.
 Sanibel and Captiva Islands
 Chamber of Commerce
 Sanibel Beautification, Inc.
 Sanibel Bike Club
 Sanibel-Captiva Art League
 Sanibel-Captiva Audubon Society
 Sanibel-Captiva Community Bank
 Sanibel-Captiva Islands Association
 of Realtors, Inc.
 Sanibel-Captiva Kiwanis Club
 Sanibel-Captiva Lions Club
 Sanibel-Captiva Shell Club
 Sanibel Captiva Trust Company
 Sanibel Community House Association
 Sanibel Current Events
 Sanibel Inn/Song of The Sea
 Sanibel Island Fishing Club
 Sanibel Moorings Condo Association
 Sanibel Public Library
 Dr. Nancy Santeusano
 Mr. and Mrs. Gustavo Santos, III
 P. and R. Santucci
 Forrest and Faye Sargent
 Robert E. and Cynthia M. Sargent
 Mrs. Gaile Sarma
 Karen and Bill Sartoris
 Mark Satterthwaite &
 Lauren Pachman
 Mr. and Mrs. James W. Sauer
 Mr. and Mrs. Franz Sauerland
 Mr. George A. Saul
 Tom Saul
 Ms. Elizabeth A. Savage
 Mike and Kirstin Sawicki
 Mr. William R. Sawyer
 Robert F. Sayre
 Mary Lou Schadt
 Doris Schaefer
 Elaine and Robert Schaeffer
 Arthur and Irene Schaff
 Dr. William Schaffner & Lois Knight
 Ed and Carol Scharlau
 Mr. Thomas Schaub
 Peter and Marie-Claude Schauer
 William Schawbel and
 Judy Samelson

Mr. and Mrs. William Scheffel
 Phil and Carol Scheiber
 Joy Schein
 Greg and Linda Scherer
 Mr. and Mrs. Robert W. Scherer
 Mrs. Verena Scheu
 Mr. and Mrs. Randolph B. Schiffer
 Mrs. Shirley Schiffman
 Amy Schlickmann
 Mr. Wil M. Schlosser
 Mr. Peter Schlossman and
 Ms. Sara Zimmerman
 Shirley and John Schlossman
 Mr. Peter Schluter &
 Dr. Christine Schluter
 Erwin and Susie Schmid
 Susan Schmidt
 Robert E. Schneider Foundation
 Wayne and Jan Schneider
 Brent and Laurie Schnell
 Jim and Sheila Schnell
 Paul and Carol Schnyder
 Theresa Schober
 Tyler and Susan Schoenherr
 Emily and Donald Schofield
 Jerry P. Schomburg
 Gordon P. Schopfer
 Larry Schopp
 Debby and John Schork
 Tim and Carmen Schramm
 Mr. and Mrs. Walter W. Schray
 Andy and Charlotte Schroder
 James and Jeffrey Schubert
 Mr. and Mrs. John D. Schubert
 Mr. and Mrs. Howard Schultz
 Robert J. Schultz
 Reverend and Mrs. Walter H. Schuman
 Dawn F. Schumann
 Guenther and Karin Schumann
 John and Jean Schumann
 Richard R. or Deanna Schumann
 Jodi Cort and Warren Schwab
 Donald and Julie Schwartz
 Drs. Lewis and Barbara Schwartz
 Craig and Susan Scott
 Mr. and Mrs. James E. Scott
 Thomas A. Scott
 Mr. Willard H. Scott, Jr.
 Mrs. Barbara B. Scovil
 Mr. and Mrs. Dmitri Scutakes
 Mr. John T. Seaman

David and Karen Searles
 Warren and Nancy Seaward
 SEBA Foundation
 Kathy Sebrowski
 Joan Secrest and Ken Koehler
 Ray and Eileen Secrist
 Mr. and Mrs. Philip Sefton
 Sehgal Family Foundation
 Mrs. Shirley Seid
 Lee and Gene Seidler
 Mrs. Linda Seifert
 Karen Semmelman
 Kate and Stuart Sergeant
 Edward and Penny Sessa
 Nelson and Virginia Severinghaus
 Mr. Sanford C. Sexhus
 Mr. Terry Stickel and
 Ms. Christina Shafer
 Mrs. Barbara C. Shane
 Lyle and Gail Shank
 Mr. and Mrs. William F. Shanley Jr.
 Judie and Tom Sharpbaugh
 Alice R.C. Sharp
 Phyllis M. Sharp
 Leo Sharpe
 Aaron J. Shatkin
 Dr. and Mrs. Shawn R. Shaver
 Betty Jane Shaw
 James Shaw
 She Sells Sea Shells
 Mr. and Mrs. John A. Shea Jr.
 Mr. and Mrs. Charles H. Sheetz
 Bob and Nancy Sheldon
 Mr. and Mrs. Kenneth J. Sheldon
 Shell Island Garden Club
 Dwight and Sara Shelton
 Mr. and Mrs. Peter J. Shelton
 Jane and Buzz Shepard
 Mr. and Mrs. Elton W. Shepherd
 Dr. and Mrs. Howard Sheridan
 Jerry and Mary Sherman
 Mrs. Johanne P. Shields
 Orlene and Steve Shimberg
 Lou and Amanda Shipley
 Shipley Foundation, Inc.
 Richard C. Shipley
 Shipley Foundation, Inc.
 Ada Shissler
 Michael and Patricia Shiver
 Mr. John S. Shober &
 Mr. Robert S. Mimms

Mr. and Mrs. C. Wesley Shook
 Ms. Deb Shoss
 Andrew and Sally Shott
 Victor and Barbara Showalter
 Leslie Shropshire
 Mr. and Mrs. Edward Shults
 Dr. and Mrs. Richard W. Siders
 Bill and Barbara Siebel
 Frank and Peggy Siegel
 Paul and Polly Sierer
 Jonathan and Evelyn Rose Silverman
 Louis and Bonnie Silverstein
 Robert and Susan Silvy
 Mr. John Simler
 Don and Jane Simmons
 Mr. and Mrs. Charles Simms
 Ms. Lori Singleton
 Dr. and Mrs. Leo Sioris
 Joe and Joyce Sirkin
 Mr. and Mrs. Dean L. Skaugstad
 Jo Ann C. Skillett
 Matthew W. Skok
 Dr. and Mrs. Leon Skolnick
 Mr. and Mrs. Kenneth L. Slawson
 Ralph and Ellen Sloan
 Mr. and Mrs. Paul M. Smart
 Mrs. Patricia Smart
 Ellen Smiley
 Mr. and Mrs. Bob Smith
 Mrs. Elisabeth A. Smith
 Mr. and Mrs. Ley S. Smith
 Libby Smith
 Martha Smith
 Mr. Matt Smith
 Nancy B. Smith
 Mr. Tracy Smith, Jr.
 Ted and Martha Smith
 Mr. Robert Smith
 Mr. and Mrs. Ronald R. Smith
 Steven and Judy Smith
 Mr. and Mrs. Steven B. Smith
 Bonnie and Richard Sneed
 Mr. and Mrs. Richard A. Snell
 James L. and Laura A. Sniff
 Mr. Wallace C. Snipes
 Ray Snowden
 Ms. Ellen Solomon
 Dr. Walter Sonneborn
 Soon Come Contract Hauling
 Richard and Roberta Sorensen
 Denny and Rusty Souers

Sallie Soule	R. Denison and Judith Stewart	Mr. and Mrs. Stuart Symington	Bob and Cindy Tillmann	USA Funds Matching Gifts Program
Sarah G. Soule	Mr. James C. Stewart	Donald and Audena Syracuse	Mr. Peter H. Tillou	Mr. and Mrs. John E. Utley
George and Patti Sousa	Mr. and Mrs. John H. Stewart, Jr.	Mrs. Bette Szony	Roger and Cynthia Timm	Chap and Lorraine Vail
South Seas Island Resort	Ms. Rachel L. Stewart	Peter and Roberta Szydlo	Mrs. Thomas G. Timmer	Mrs. Gretchen C. Valade
Howard and Juanita Spanogle	Mr. and Mrs. Richard Stewart	Szymanczyk Family	Anne P. Tipton	Bill and Diane Valerian
Charles Specht and Jan Alden	Stephen Stewart	Dr. Stephen and Joan Szynal	Brenda and Sam Tishler	Mr. and Mrs. Steven E. Valla
Mr. and Mrs. Jared Specthrie	Stilwell Enterprises	Joel and Susan Tabas	Mr. and Mrs. Guy H. Tober	Mrs. Roxanne Van Bokkelen
Ms. Carol Spencer	Mr. and Mrs. Howard F. Stirn	Ann H. Talcott	Ms. Barbara C. Tobin	Tania Van Dyk
Mrs. Evelyn K. Spencer	Ms. Doris M. Stoddard	Mr. and Mrs. Robert Tanner	Teddi Tolf	David Van Dyke and Elisabeth Devlin
John Spencer	Thomas B. Stoel, Jr.	Tarpon Bay Explorers	Rebecca Totaro and Greg Tolley	Bette J. Van Scyoc
Mr. John W. Spencer	Mrs. Charlotte C. Stokes	Brenda and Dewey Tate	Helen Toman	Mrs. Joseph Van Vleck
Joan Sperry	Don and Lillian Stokes	Ray and Nancy Tatko	Mr. and Mrs. John L. Tomasovic	Mrs. Sarita Van Vleck
Ms. Karen A. Spittler	Jerry and Nancy Stone	Mrs. Virginia S. Taub	Breese O. Tomick	Mrs. Theodora Vander Maazen
Mrs. Nan H. Sprague	Stop-It, Inc.	Ms. Lee Anne Tauck	Mike and Meg Toomey	Bill and Annie Vanderbilt
George and Susan Sprehn	Gwen Stoughton	Mr. and Mrs. John E. Taylor	Stan Toomey	Irene C. Vandermolen
H.D. Sprinkle, II	Mr. and Mrs. Stephen Stranahan	Leslie O. Taylor and Connie L. Taylor	Margaret Toth	Mr. Harry J. Vandevelde
Mr. Bruce T. Sprinkle	Carol and Larry Strange	Mrs. Merrill J. Taylor	Mr. and Mrs. John M. Totten	Don Vap
Mrs. Ann Marie Sprotte	Robert and Elaine Strauss	Mike and Leanne Taylor	Nancy A. Tracy-Richmond	Bob and Sharon Vartdal
Mr. and Mrs. Richard Sprout	Sabin and Beverley Streeter	Mrs. H. Richard Taylor	Cliff and Sandy Traff	Mr. Paul Vaughan
Gretchen and Halsey Spruance	Barbara Strell	Becca Teaster	Dick and Sandie Travas	Mr. and Mrs. Glen E. Vaughn
Dick and Marti Squitieri	Virginia and Edward Stringer	Mrs. Mary L. Tecklenburg	Hal and Sue Tray	Ray J. Vazquez
Mrs. Joseph St. Cyr	Manfred and Ellen Strobel	Mr. and Mrs. R. F. Teerlink	Nancy and Tom Traylor	Mrs. Janet S. Vea
John and Inge Stafford	James and Linda Strong	Joan Teigen	Frank A. Tredinnick, Jr.	Mrs. Muriel C. Veenschoten
Tom and Carol Stafne	Jack and Barbara Strothman	Mr. and Mrs. Lynn A. Tentler	Dr. and Mrs. Roger W. Triftshauser	George E. Veillette, Jr.
Bill and Shirley Stahlheber	John and Sara Stubbing	Dan and Margy Terpstra	Mrs. Barbara B. Trimble	Kathy and Thomas Veratti
Paul and Joan Staley	Dr. Robert H. Stults	Terra Foundation	Ken and Pam Trombly	Rod and Gerry Verblaauw
Brad and Shelli Stanback	Mrs. Norman R. Sturgis	Mr. and Mrs. Terrence Terrana	David R. Trout	Ray and Susan Verdon
Fred and Alice Stanback	Mr. and Mrs. Peter A. Sturtevant	Niko and Ursula Teuffel	Leanne F. Trout	Mr. and Mrs. Paul Verret
Barb Stanek	Mrs. Lorrie Stys	Mr. and Mrs. Walter M. Thackara	David and Louise Trubek	Hugh and Anne Verry
David M. and Jean Stanley	Dr. and Mrs. Harvey Sugerman	The AWC Family Foundation	Mr. Hyde Tucker	Douglas H. and Priscilla B. Viets
Mr. and Mrs. Thomas M. Stanton	Bert and Patty Sullivan	Mr. Harold L. Theiss	Susan and Bob Tucker	Roger and Nancy Vincent
Mr. and Mrs. Bob Stanza, Jr.	Mr. and Mrs. Richard J. Sullivan, Jr.	August and Maureen Thoma	Mr. Stephen Tuckman	Bob and Mary Jane Vinson
Douglas and Lorelei Starck	Kristin Summerwill	Jack Thomas	Jack Turner	Amy L. Vint
Staritch Foundation, Inc.	Suzanne Summerwill	Jack and Kellie Ann Thomas	John and Judy Turner	VIP Karen Bell Realty, Inc.
Carole Stark	Sunny Day Guide of Sanibel-Captiva	Dr. and Mrs. James A. Thomas	Richard T. Turner	Mr. Richard A. Virzi
Mrs. Catherine L. Staten	SunTrust Bank Of SW Florida	Mr. and Mrs. Joseph H. Thomas	Sheila H. Turner	Mrs. Barbara S. Vockel
Mr. and Mrs. H. W. Steane	SunTrust Bank Sanibel	Mr. and Mrs. Alf R. Thompson	Mr. and Mrs. Richard R. Turney	Victor and Moni Vojcek
Vesta B. Stearn	Superior Title Services	Mrs. B. J. Thompson	Ellen S. Tuttle	Bill and Mary Vollmer
Ms. Jane Stechly	Elaine G. Suppes	Mr. Christopher J. Thompson	Robert Tuttle	Mr. and Mrs. Dale Von Haase
Mary and Bill Steeb	Mr. and Mrs. Donald B. Suss	Fred J. and Virginia V. Thompson	Jim and Susie Tweddell	Barbara and Rick Von Harten
Christine and Jerry Steege	Thomas C. Sutphen	Mr. and Mrs. Jon L. Thompson	Tween Waters Inn	Amy Von Keyserlingk
Gene and Sheryl Steele	Janice and Chris Swain	Mark Thompson	Mr. and Mrs. Chris C. Tyler	Mr. and Mrs. John Voorhees
Pumfey Steffens	Trudi G. Swain	Stan and Denise Thompson	Jack and Jeanne Tyrer	Mr. Hans J. Vorpahl
Mr. and Mrs. Dennis Stehr	Mike and Liz Sweeney	Peter and Sheila Thornley	U.S. Trust - Bank of America	Gretta Vosper
Mr. and Mrs. Irwin Stein	Mr. and Mrs. Roy Sweeney	Mr. and Mrs. John M. Thornton	Martin and Laura Uhle	Mr. and Mrs. Burton Wagner
Stemic Enterprises, Inc.	Mrs. Sara T. Swift	Davis and Patricia Thurber	Paul and Virginia Uhlenhop	Helena Wagner
Jerrold and Lynne Stern	John and Carolyn Swiney	Juergen and Heidi Thyssen	Linda and Tom Uhler	Robert and Kathleen Wagner
Ed and Cathy Stevens	Mr. and Mrs. James D. Switzer	John and Alice Tiano	David Ulstad	Roger Wahl and Joan Becker-Wahl
Dr. and Mrs. Harold R. Stevens	Mr. and Mrs. John H. Swope	Malcolm Ticknor	Andrew and Katie Unkefer	Mr. Andy Wahlberg
Robert and Glenda Steves	Mrs. Claire Sylvester	Mr. Paul Tiffany	Matt and Diane Uren	Dodd and Annie Wainwright
Daniel and Becky Steves	Catherine Symchych	Ralph and Carol Tillitt	Mr. Phillip A. Urion	Dayton and Sarah Wakefield

David Waks and Sandy Teger
Mrs. Kathryn Waldrop
Susan Waldstein
Mrs. Barbara H. Walker
Doris and Jeffrey Walker
Mrs. Elaine B. Walker
Jeffrey P. Walker
Jerry Walker
Robert and Cynthia Walker
Mr. and Mrs. David Wallace
Mr. Henry D. Wallace
John and Norma Walley
Doug and Barbara Walling
Mr. and Mrs. Michael A. Walpole
Katie Walsh and Steve Glynn
Bill and Judy Walter
Kevin and Abbie Walter
Sally and David Walther
The Waltke Family
Alice and Joseph Walzer
Mr. David Ward
Eleanor Ward
Angela Wardroper
Mr. and Mrs. Tom Ware
Beth E. Warner
Mrs. Ann Kirk Warren
Bev and Jeff Warren
Mr. and Mrs. Gilbert M. Warren
Field and Mary Ann Wasson
Richard and Gloria Waterhouse
Ms. Amy Lou Waters
Carol and Ed Watkins
Mary Watson
Mr. Robert G. Watson
Joel Weaver
Shara and John Weaver
Danne and Stephanie Webb
Jean R. Webb
Arthur R. Weber
John and Shirley Weber
Ms. Sue Webb
Gregory E. Weddell
Nanelle Wehmann
Mr. and Mrs. Clarence L. Wehner

Mark and Lynn Weikel
Ms. Betty J. Weimer
Elaine Weingarden
Ms. Suzanne B. Weinheimer
General and Mrs. John J. Weinzettle
Suzanna Weisenfeld
Peggy and Mark Weiss
Arthur and Joyce Weissbach
Craig and Mary Welch
Deana and Lyman Welch
James and Vedna Welch Foundation
Mary Ruth Welch Staadt
Mr. Rick Welch
Yolande M. Welch
Mr. and Mrs. Jack Wellauer
Georgia Wellman
Ms. Judith K. Wellons
Brian and Meghan Wells
Andrew and Eileen Weltcheff
Richard and Betty Weltcheff
Martin Wenick and Alice Tetelman
Donald and Patricia Wentling
Mr. and Mrs. Charles M. Werkheiser
Alex Werner & Karen Storzjohann
Cal and Jill Werner
Jane E. Werner
Christian R. Wessel
Ms. Rae Ann Wessel
Mr. and Mrs. Rodney M. West
Dr. and Mrs. William H. West
West End Paradise
West Wind Inn
Arlen Westbrook
Ruth Westheimer
Mr. John J. Weston
Mr. Ralph E. Weston and
Ms. Caroline M. LeGette
Andrew Westreich
William and Gloria Westrick
Doug and Gloria Wetmore
Jim and Helene Weyant
Al and Kathy Weyman
Phil and Tina Weyman
Michele Whalen and Valerie Summer

Mona Wheatley
Jerry and Carolyn Wheaton
Dr. Edward C. Wheeler and
Anne E. Haslem
Margaret and Albert White
Ms. Marilyn C. White
Randy Wayne White
Robert White
Mrs. Martha Whitehouse
Kim Whitehurst
Mr. and Mrs. Charles Wiebe
Diane Wien
Jeannie H. Wigand
Mr. Robert W. Wiggins
Fred and Kay Wightman
Allie Wigley
Bob Wigley
Elizabeth Wigley
Kate Wigley
Mr. and Mrs. Roy Wildeman
Wildside Adventures/Captiva Kayak
Mr. and Mrs. Richard O. Wilhoit
Mr. and Mrs. R.N. Wilkinson
David L. and Karen J. Williams
Mr. and Mrs. Duane N. Williams
Flo and Kirk Williams
Mr. Kirk R. Williams
Mr. and Mrs. Robert E. Williams
Ms. Sandra L. Williams
Mr. and Mrs. Thomas W. Williams
Tommy and Trudy Williams
Vara R. Williams and
Kathryn W. Jones
Mr. and Mrs. John M. Williamson
Mrs. W. A. Willig
Jodi Willis
Valerie Willis
Pat and Harvey Wilmeth
Greater Milwaukee Foundation's
Patricia Smith Wilmeth Fund
Mr. and Mrs. Frank E. Wilson
Jim and Jean Wilson
Mr. and Mrs. John R. Wilson
Peter D. Wilson

Wilson Family Fund
William Wilson and Patricia Pombo
Mr. and Mrs. Robert H. Wingels
Mrs. Lorraine Winpenney
Arnee R. and Walter A. Winshall
Mr. and Mrs. Robert C. Winters
Dolores E. Wisdom
George and Veronika Wiss
Mrs. Iris S. Witkowsky
George C. Witte, Jr.
Judith Wittenberg
Mr. and Mrs. Harlan E. Wittkopf
Mark and Deborah Wlaz
Mr. and Mrs. Paul M. Wlos
Warren Woessner and Iris Freeman
Mr. and Mrs. Gerhard K. Wohrl
John and Martha Wolf
Mr. and Mrs. C. F. Wolfe
Martin S. Wolfe
Richard and Artley Wolfson
Mark Wollschlager
Mr. and Mrs. William P. Wollschlager
Mrs. J. Howard Wood
Joan R. Wood
Dr. and Mrs. Michael Wood
Greg and Ruth Woodham
Ralph and Jean Woodring
Woodworth-Upjohn Foundation
Ms. Linda Woolard
Chet and Leish Work
Ralph and Janet Wozniak
Mr. Gary Wright
Richard and Gail Wright
Jon and Connie Yambert
Mrs. Anne Gates Yarnall
Charmaine Yeadon
Judy Yenkole
Stephen and Donna Yetzko
Ben and Heidi Yokel
Mrs. Susanne M. Yokel
Ms. Ellen C. Yorke
Mr. and Mrs. Charles D. Young
Mr. and Mrs. Wayne Zahn
Ms. Pamela Zapf

Patsy Zapf
Eugene F. Zelek and
Margaret C. Christie
Carol and Peter Zell
Steve and Joan Zickel
Joseph and Barbara S. Ziemian
Matthew and Katherine Zilboorg
Fred and Diane Zimmer
Bill and Patty Zimmerman
Elizabeth H. Zimmerman
Mr. and Mrs. John D. Zimmerman
Ms. Judith A. Zimomra
Doug and Kathy Zimpfer and Family
Roger and Kathleen Zockl
Dr. Suzanne K. Zoss
Mr. and Mrs. Gus A. Zuehlke
Sheila A. Zuhusky
Rick and Evette Zurbriggen
Mrs. Nancie J. Zwerlein
William Zywiciel

Memorials

In Memory of Margery Angst by:
 Mary B. Carter
 Deborah and Leon Socha
 Sallie Soule
 Mr. and Mrs. John S. Steel
 Mrs. Norman R. Sturgis

In Memory of Sam Bailey by:
 Joe and Joyce Sirkin
 Mrs. John C. Veenschoten
 Mrs. Muriel C. Veenschoten

In Memory of Sal and Makie Beattie by:
 Noel Mann

In Memory of Dick Beston by:
 John and Sheilah Morley

*In Memory of Phyllis and
 Irwin Bogen by:*
 Janice M. Bogen

In Memory of Hugh Cameron by:
 Armand and Beverly Ball

In Memory of Rick Evans by:
 Bill and Herta Linnell

In Memory of Anne Gallagher by:
 Mr. and Mrs. Tom Ware

In Memory of Ron Gestwicki by:
 Carol Gestwicki

In Memory of Jean and Ross Hiles by:
 George and Judy Hiles

In Memory of Charley Hutchings by:
 John and Sheilah Morley

In Memory of Mary Jo Hynden by:
 Nancy and Randy Cooper
 Michael McGraw

In Memory of Bob and Mary Linstrom by:
 Mr. and Mrs. Richard J. Bennett
 Mrs. Katherine D. Fishback

In Memory of David Lund by:
 Mrs. Muriel C. Veenschoten

In Memory of Ann McCullough by:
 Armand and Beverly Ball

In Memory of Arthur McFarlane by:
 Don J. MacFarlane

In Memory of George McKinnell by:
 Red and Kristie Anders
 Charlotte Baker
 Linda and Wayne Boyd
 Richard L. Deming
 Eric Eskeland
 Diane and Les Forney
 Shirlene H. Grasgreen
 Carol and Mary Helming
 Shelby Mattioli
 Mrs. June McKinnell
 Mr. and Mrs. S. Montclare
 Edgar and Joyce Rand
 Bill and Jeanne Rankin
 Mr. and Mrs. Paul F. Roth
 Klaus and Mary Ann Saegebarth
 Marilyn Sivewright
 Mrs. Norman R. Sturgis
 Mr. and Mrs. William P. Wollschlager

In Memory of Herma Miller by:
 Birgie Vertesch

In Memory of Jillian Neumann by:
 Don and Lynda Coers

In Memory of Jack Rogers by:
 Red and Kristie Anders
 Mr. and Mrs. Klaus Burzin
 Mr. and Mrs. William A. Copeland
 Richard L. Deming
 Tom and Diane Donaldson
 Mr. and Mrs. James C. Egan, Jr.
 Mr. Robert Ervien, III
 John and Margaret Foskett
 Dr. and Mrs. Irving S. Johnson
 Nancy B. Johnson
 Harry and Nancy Lane
 James and Karen Livingston
 Jack and Victoria Madaras
 John and Sheilah Morley
 Hiram Rogers and Jean Gauger
 Ms. Barbara C. Tobin
 Vera Webster

In Memory of Adrian Sabety by:
 Drs. Elizabeth and Charles Crandall
 Jack and Victoria Madaras
 Donald and Audena Syracuse

In Memory of Jim Sperry by:
 John and Sheilah Morley

In Memory of Roberta Spring by:
 Patricia L. Geadelmann

In Memory of Paul Reed Toomey by:
 Nancy Stroh

In Memory of Charles E. Wagner, Jr., by:
 Jim and Amy Clapp

In Memory of Hugh Whitehouse by:
 Tom and Beth Gillis
 James Greenwald
 Mr. and Mrs. William R. Hasler
 Molly and David Vaux
 Henry Whitehouse and
 Susan Whitehouse
 Lee Fowler Whitehouse and
 James Whitehouse
 Mrs. Martha Whitehouse

Native Plant Nursery

In addition to providing a retail operation, the Native Plant Nursery also provides landscaping and yard maintenance services, both to private homeowners as well as the City of Sanibel and the Captiva Community Panel. Last summer, nursery staff spent countless hours



and a great deal of hard work enhancing the new restroom facility at the Sanibel boat ramp. The project included installing native plants immediately around the restroom itself as well as enhancing the buffer between the restroom and the adjoining parking lot. Over 800 plants were put in the ground, representing over 50 different species, including many plants listed as threatened or endangered by the State of Florida.



Legacy Fund Endowments

The Legacy Fund endowments as of the June 30, 2011 close of the fiscal year totaled \$2,888,844. This year, the Board of Trustees transferred \$51,765 toward program support, representing 2 percent of the average fund value over the previous 12 quarters. That program support is distributed through six program funds reflective of the Conservation Foundation's core program areas:

- The Preservation Fund, supporting our general operations and ensuring our ability to act in support of the Foundation's mission statement
- The Habitat Management Fund, allowing us to manage the land we have acquired for perpetual conservation
- The Landscaping for Wildlife Fund, taking the principles of habitat management to homes, businesses, and transitional corridors
- The Environmental Education Fund, underwriting staff positions and broadening our program outreach

- The Sea Turtle Conservation and Research Fund, supporting our work with threatened loggerheads and other endangered sea turtles
- The Marine Laboratory Fund, endowing research and public policy activities and promoting the health of the marine nursery areas surrounding our islands

We were saddened to learn of the passing of Margery Angst and John Purdy, who had both remembered SCCF with generous bequests.

This year, Evelyn Spencer was inducted into the Legacy Society during the December 7, 2010 annual membership meeting. Shortly thereafter, SCCF Trustee Philip Puschel and his wife, Roberta, kindly told us they have included SCCF in their estate planning. We are thankful to them and all the Legacy Society members who have used various planned giving vehicles to support the Legacy Funds. To date, we are aware of the following types of planned gifts

Cont'd right

Tom and Mimi Adams
 Bill and Margery Angst
 AWC Family Foundation
 Armand and Beverly Ball
 Edward Beattie
 Chuck and Sally Bisbee
 Helen Blomquist
 F. N. Bowles, Jr.
 Claudia Burns
 Dick and Mary Butler
 Yolanda Cannon
 Adelaide Cherbonnier
 Peter Blaze Corcoran
 Nancy and Richard Curtin, M.D.
 Don and Carolyn DeCoster
 Meleanor and Donald Deming

Elizabeth Eagleton
 Millie B. Ford
 Charles and Janet Gleason
 Phyllis and Glen Gresham
 Bill and Nancy Hanger
 Bob and Jane Hanger
 Al and Sally Hanser
 Bill and Tina Hillebrandt
 Harry Huizenga
 Larry and Jeannette James
 Linda and Greg Jennings
 Louise Johnson
 Virginia and Thomas Johnson
 Joan and Wally Kain
 Kind World Foundation
 Stephen and Barbara King

Kip and Andrea Koss
 Deborah and John La Gorce
 Virginia Letourneau
 Sally Lupfer
 Bob and Tricia Maxeiner
 Nancy McDowell
 Bill and Betsy Pugh
 John D. Purdy
 Philip and Roberta Puschel
 John Raffensperger, M.D.
 and Susan Luck, M.D.
 Sally Reed
 Jack and Rose Rogers
 Robert E. Schneider Foundation –
 Dick Schneider
 John and Florence Scott

Barbara Shane
 Sallie and Gardner Soule
 Sovereign People Internship Fund
 Evelyn Spencer
 David Stanley
 Vesta Stearn
 Linda Sturgis
 Barbara Tobin
 Linda and Tom Uhler
 Gretchen Valade
 Judy Wellons
 Jane Werner
 Bob Wigley
 Pat Wilmeth
 Bill and Ann Wollschlager
 Barbara Wood

Volunteers

Our volunteers continue to sustain SCCF with their expertise and dedicated hard work. We had 445 volunteers work a total of 11,850 hours. The actual number is probably higher because we know we miss capturing some hours for various reasons. A special thanks to our volunteers who help us protect the aquatic resources and coastal habitat on Sanibel and Captiva and in the surrounding watershed!

Membership

The Foundation's 2,390 members are the lifeblood of the Foundation. The history of SCCF is part of the history of the islands and for over 40 years, we have been proud to be a part of this very special community. But we can't do it without you.

Thank you!

Volunteer Hours

<i>Program</i>	<i>Number of Volunteers</i>	<i>Number of Hours</i>
Board of Trustees and Committees	39	732
Captiva Cruises Wildlife Cruise docents	15	1,000
Carpentry Crew (Hammerheads)	10	3,277
Marine Laboratory	195	1,211
Native Plant Nursery	23	739
Nature Center and Office	47	2,749
Sea Turtle Conservation Program	78	1,358
Shorebird Monitoring	5	259
Special Events	12	100
Trail Guides	13	247
Weeds 'N Seeds	1	32
Habitat Management (Trail Blazers)	7	146

Legacy Fund Endowments — continued from left

being used to endow our efforts:

- Outright Gifts of Cash, Real Estate, Securities and Life Insurance – We have received 28 outright gifts to date in this category.
- Charitable Lead Trusts – The Foundation will benefit in the future from one charitable lead trust
- Charitable Remainder Trusts – Planned gifts to the Foundation include eight remainder trusts
- Charitable Gift Annuities – Members have created ten gift annuities in support of the endowments (Please note the Board has suspended the gift annuity program at this time.)

- Trusts and Bequests – We are aware of the Conservation Foundation being remembered in 36 bequests and trust vehicles. Among others, we are most grateful for the planned bequests made by the new Legacy Society members listed above.

If you have endowed our work through any of these vehicles and feel we are unaware of your gift, we hope you will inform us so we may thank you now for the gift you have planned for the future. It is our hope to recognize new Legacy Society members at our annual membership meeting on December 7, 2011.

Special Events

SCCF kicked off the beginning of the season on September 18 with the coordination on Sanibel and Captiva of the Ocean Conservancy's 25th International Coastal Cleanup. Volunteers recorded specific debris found, from cigarette filters to crab traps. Data recorded over the years is used by the Ocean Conservancy for education and research.

The Foundation's Annual Meeting was held Tuesday, December 7. Six outgoing board members, Bill Fenniman, Rob Gibson, Jim Haggart, Tom Lagan, David Lowden and Art Weissbach, were recognized for their service. New board members voted in at the meeting were Claude Crawford, Philip Puschel, Robbie Roepstorff and Patti Sousa. After the Foundation status reports and board inductions, members enjoyed a casual dinner.

The Life Member/Benefactor Luncheon was at the Sanibel Community House on February 9. Kristie Anders interviewed Francis Bailey, eliciting stories about early fire fighting on the islands, among other things.

Fundraising Events

Our second annual **Wines in the Wild** on November 13, 2010, was a splendid success. Our hat's off in appreciation to local wine *aficionados* Linda and Tom Uhler, who again coordinated the event. Attendees visited six wine stations set up on the Nature Center porch and boardwalks to sample fine wines that were all organic, sustainable and biodynamic. Delicious *hors d'oeuvres* were prepared by Catering by Leslie Adams. Guests enjoyed the festive atmosphere and the chance to linger and visit with friends.

Special Host Committee members who sponsored

Visiting families and residents enjoyed SCCF's annual Open House on President's Day, Monday, February 21. Family friendly displays, crafts and the ever-popular Nature Sounds Contest were enjoyed by all. Offered again this year was a bus tour of SCCF preserves.

On Monday, February 21, SCCF hosted the Chamber After Hours. Island business members had an opportunity to enjoy the ideal outdoor location of the Nature Center porch and learn more about SCCF.

Staff took another great opportunity to use the outdoor porch for the Volunteer Party on March 10. Volunteers had the opportunity to visit with each other and to explore the outdoor areas at the Foundation. Catering by Leslie Adams provided an abundant buffet that included appetizers, salads, salmon, casseroles, and desserts. Awards were passed out in recognition of the invaluable contribution of our volunteers.

Earth Day was celebrated in April with field trips to Worden Farms and Lee County's recycling center.

the event included Nancy and Pete Bender, Linda and Wayne Boyd, Janie Howland, Mike Kelly, Deborah and John LaGorce, Ellen and Erick Lindblad, Ann Moran and Bob Wigley, Kay and John Morse, Nancy and Chip Roach, Robbie and Geoff Roepstorff – Bank of the Islands, Lucy and Paul Roth, Donna and John Schubert, Martha and Rick Siders, Rebecca Totaro and Greg Tolley and Nanelle Wehmann. Special thanks are also due Ginny Egensteiner, the Hammerheads, Norman Love Confections, Sweet Melissa's Café and Total Wine.

Environmental Education

Living With Wildlife classes at the Nature Center as well as on-the-water classes continue to be strong components of education. Bird fly-ins to night roosts, wildlife and dolphin cruises, science at sea, and history of fishing are the mainstays of the boat trips.

Living With Wildlife programs were enhanced by the addition of several large aquaria housing a variety of turtles (Florida snapper, softshell, Peninsula cooter among others) and several diamondback terrapins, as well as a mangrove water snake. Dee Serage has been working closely with island golf course workers to provide education about co-existing with the island's alligators. During season, she also began leading Wildlife Tours at The Dunes. The Pick Preserve continues to provide valuable outdoor learning for students at The Sanibel School.

SCCF has supported community-based programs including participation in Islands Night, Bailey Fest, "Ding" Darling Days, Captiva Holiday Village, Shell Point Academy, 4th of July festivities and a new program called Sanibel Trails and Tales.



Chief Hammerhead Dean Skaugstad with one of the dollar bills that formerly decorated the walls of Barnacle Phil's on North Captiva.



Ornate Diamondback Terrapin.

EE staff works diligently to build the relationship between conservation and businesses. SCCF preserved lands are a unique feature of the islands' landscape and are integrated into the visitors' positive perception of their experiences. The realtor education workshops and classes continue to demonstrate the close ties between conservation, quality of life and real estate values.

North Captiva's preserved land came about through efforts of SCCF in the 1970s. The residential community has grown in its dedication to preservation of coastal habitats. Due largely to the will of North Captivans, a North Captiva Conservation Fund has been established for eradication of Brazilian pepper and provide educational opportunities. Money has been raised by removing the dollar bills off of the walls of Barnacle Phil's Restaurant, proceeds from a play and generous donations. SCCF's Kristie Anders is chair of their Community Panel which interfaces with the county on North Captiva environmental protection issues.

Fundraising Events — continued from Page 24

SCCF's 19th Annual Tennis Tournament was held at The Dunes Golf & Tennis Club on April 9 and 10, benefiting the Foundation's General Operating Fund. The event kicked-off with a special cocktail party at SCCF Friday evening, April 8, as players enjoyed drinks and food from Catering by Leslie Adams.

This year's Presenting Sponsor was the Sanibel-Captiva Trust Company. Championship Sponsors for the event were: Linda and Wayne Boyd, Bill and Tory Burch, Lucas Century Glass; Match Sponsors were: Dick and Robin Cohan, Mike Kelly, Deborah and John La Gorce, Rick and Martha Siders and VIP Karen Bell Realty, Inc.; Set Sponsors were: Tom and Mimi Adams, Barefoot Charley's Painting, Kelton and Betsy Burbank, Fran Cameron, Dick and Nancy Curtin, Don and Ginny Egensteiner, Tim and Carol Gardner, Fredarick and Suzanne Gobel, Jane Hanger, Charlie and Caroline

LeGette, Sally Reed, Paul and Lucy Roth, Jodi Cort and Warren Schwab, Island Chiropractic Center, Tom Settanni, Sallie Soule, Jack and Starr Thomas, Patrick and April Tzanis, and Nanelle Wehmann; Game Sponsors were: John and Gloria Agel, Harry and Mona Gleitz, Inge and Henry Glissman, Ken and Pam Monahan, Joe and Marjorie Pacheco, Hal and June Patinkin, Carol and Bill Rosenberg, Indigo Press and Poco Loco Sanibel. A special thanks to The Dunes Golf & Tennis Club for making the tournament a resounding success!

A very special thanks are due Jodi Cort and Warren Schwab, who took on the daunting task of chairing this year's tournament. In addition, the Pavel & Blackwood Tennis Academy at The Dunes Golf provided invaluable support again this year, especially Pros Rob Vinal and Toni Halski and Tennis Shop Manager Diane Limeri.

Policy — continued from Page 6

is Cape Coral stormwater being discharged without treatment directly into Matlatcha Pass Aquatic Preserve. Working with other stakeholder partners, SCCF continues to challenge the state action and is working to get the barrier rebuilt to protect our region's best fishing and aquatic habitat from nutrient pollution. In July 2011 Lee County filed an appeal with the Florida Second District Court of Appeal. Our work continues

Legal Action — Harbour Point: .

See story on Page 7 about SCCF's seven-year fight to preserve black mangroves on Captiva.

Legislative session: With a new administration in Florida, the Governor, cabinet and many freshman legislators took over in Tallahassee. Unprecedented changes include the loss of the state's growth management agency, repeal of wetland protection regulations on Ag land, loss of funding for Florida Forever conservation land purchases and minimal support for Everglades Restoration. 2012 will feature redistricting. Legislative and water policy efforts were supported with a \$50,000 grant from the Everglades Foundation to inform legislators, water managers and the public about water issues and solutions.

Board of Trustees & Committee Chairs

Board of Trustees

Paul Roth, *President*

John La Gorce, *Vice President*

Janie Howland, *Treasurer*

Bill Burch, *Secretary*

Erick Lindblad, *Executive Director*

Claude Crawford

Doris Holzheimer

Philip Puschel

Robbie Roepstorff

Martha Siders

Patti Sousa

Dr. Greg Tolley

Barbara Von Harten

Carol Ann Zell

Committee Chairs

Janie Howland, *Finance*

Janie Howland, *Nominating*

Linda Uhler, *Membership*

Bill Burch, *Special Events (formerly Resource Development)*

Cheryl Giattini, *Annual Fund Drive*

Dr. Greg Tolley, *Marine Laboratory*

Dr. Claude Crawford, *Marine Laboratory*

Dean Skaugstad, *Hammerheads (Carpenters)*

Operating Finances FY 2010/11

Income:

Contributions/Memberships	\$ 749,495
Admissions	15,803
Native Plant Nursery	154,602
Environmental Education	135,312
*Wildlife Habitat/Land Management	414,118
*Marine Laboratory	659,247
Memorials	15,935
Special Events	50,712
Miscellaneous Income	4,046
Interest/Dividends	935
Endowment Operating Support	281,130

Total Operating/Project Income \$2,481,335

Totals \$2,481,335

Expenses:

Program Services and Management	\$ 741,581
General Operations	99,974
Native Plant Nursery	59,031
Education	128,496
Wildlife Habitat Management	414,118
Marine Laboratory	659,247
Memorials	15,935
Special Events	25,565
Miscellaneous Expense	9,651
Insurance	36,390
Physical Plant	32,810
Public Relations	40,404
Capital Expense	--
Total Operating/Project Expenses	\$2,263,202
Fund Balance Carry Forward for Fall 2011	\$218,133
Totals	\$2,481,335

* Income figures shown for program areas which receive Designated Funds and Grants, are equivalent to that program's expenses. Designated Funds and Grant Income balances are carried forward to the next fiscal year as projects continue.

Staff & Volunteer Support Staff

Administrative:

Erick Lindblad, *Executive Director*
 Wendy Cerdan, *Business Manager*
 Cheryl Giattini, *Legacy Programs*
 Karen Nelson, *Communications Coordinator*

Environmental Education:

Kristie Anders, *Education Director*
 Dee Serage-Century, *Living with Wildlife Educator*

Nature Shop Volunteer Coordinator:

*Fran Cameron

Native Plant Nursery:

Jenny Evans, *Native Plant Nursery Manager*
 Rebecca Grotrian, *Native Plant Nursery Assistant*
 Em Hayes, *Part-time Assistant*
 **Seanna Berry, *Intern*
 **Kate Brumfield, *Intern*
 **Audrey Fusco, *Intern*
 **Tim Perez, *Intern*

Natural Resource Policy:

Rae Ann Wessel, *Director*

* **Volunteer** ** **Intern**

*** **Grant-supported** ~ **Collaborator**

• **Position shared with USFWS/J.N. "Ding" Darling NWR**

Marine Laboratory:

Dr. Loren Coen, *Director*
 Dr. Eric Milbrandt, *Research Scientist / Director*
 Dr. Rick Bartleson, *Research Scientist*
 Dr. Alex Rybak, *Research Scientist, GIS/Database Admin.*
 Lucy Pongetti, *Grant Administrator*
 ***Sabrina Lartz, *Research Assistant*
 ***Keleigh Provost, *Research Associate*
 A.J. Martignette, *Research Assistant*
 Jeff Siwicke, *Research Assistant*
 ***Mark Thompson, *Research Associate*
 ~Dr. Art Weissbach, *Visiting Research Scientist*
 Carolyn Kovacs, *Intern*
 Nicole Martin, *Intern*

Wildlife Habitat Management:

Chris Lechowicz, *Director & Herpetologist / I.T. Specialist*
 Amanda Bryant, *Biologist / Sea Turtle Coordinator*
 Victor Young, *Field Technician*
 •Toby Clark, *Field Technician*
 ***Joel Caouette, *Snowy Plover Technician,*
USFWS Challenge Cost Share Grant
 ***Heather Porter, *Snowy Plover Technician,*
USFWS Challenge Cost Share Grant
 **Rochelle Hauge, *Intern*
 **Michelle Pytleski, *Intern*

Sanibel-Captiva Conservation Foundation

3333 Sanibel-Captiva Road, P.O. Box 839, Sanibel, FL 33957

www.sccf.org

sccf@sccf.org

Office: (239) 472-2329 Fax (239) 472-6421 / Marine Lab: (239) 395-4617

Native Plant Nursery: (239) 472-1932 / Wildlife Habitat Management: (239) 472-3984

Annual Report design by Karen Nelson

Map of Preserved Lands by Alex Rybak

Funds for printing the Annual Report
were generously provided by:



As the oldest locally owned and managed bank on the islands, Bank of the Islands is proud to be SCCF's partner in conservation.

“We believe we have an obligation to support the communities we serve. In part, we do that by supporting organizations working to make their community the best it can be.

For the past four decades, SCCF’s conservation activity has helped define what makes our islands so special. We are honored to play a part in making that happen.”

Geoffrey Roepstorff
Chief Executive Officer

Legend for Front Cover Map



SCCF



Lee County



City of Sanibel



J.N. "Ding" Darling NWR



State of Florida