


## North Spreader Waterway

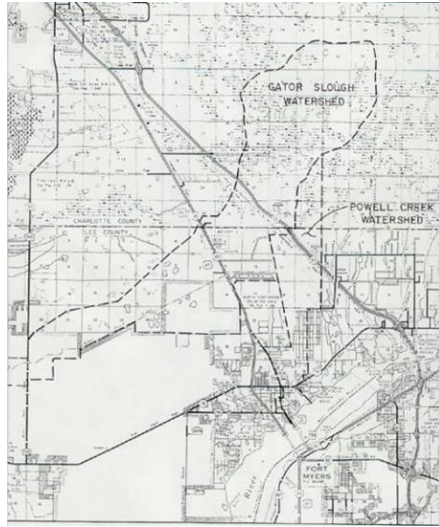
- **Gator Slough Watershed**
  - **History**
  - **December 2006 “plan A”**
  - **July 2007 re-evaluation**
  - **Revised strategy**
    - Arrest damage to the wetlands in the South
  - **EcoSystem Management Process**
    - Time to evaluate solutions
- 

Bottom Line FIRST

Stop the wetlands damage

Find solutions that will actually  
*work*

## Gator Slough Watershed

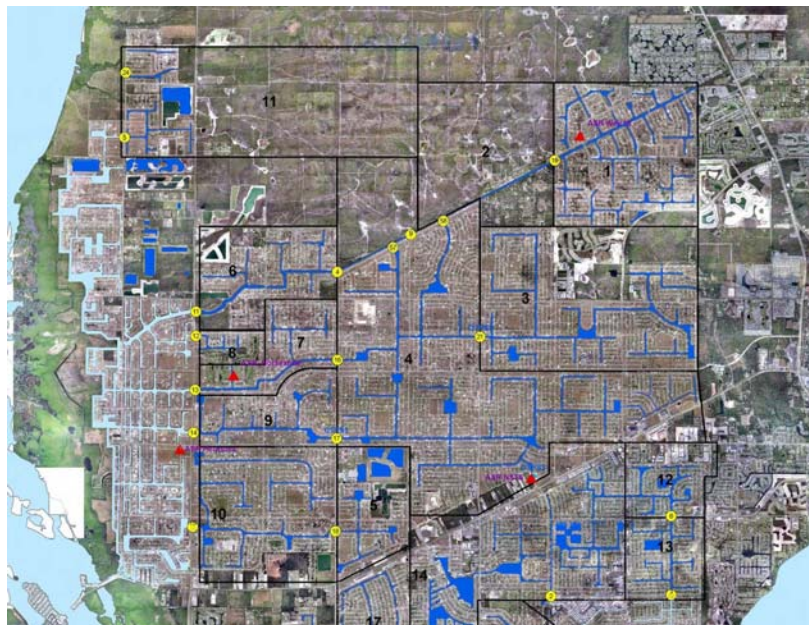


Southern DataStream, Inc. July, 2001

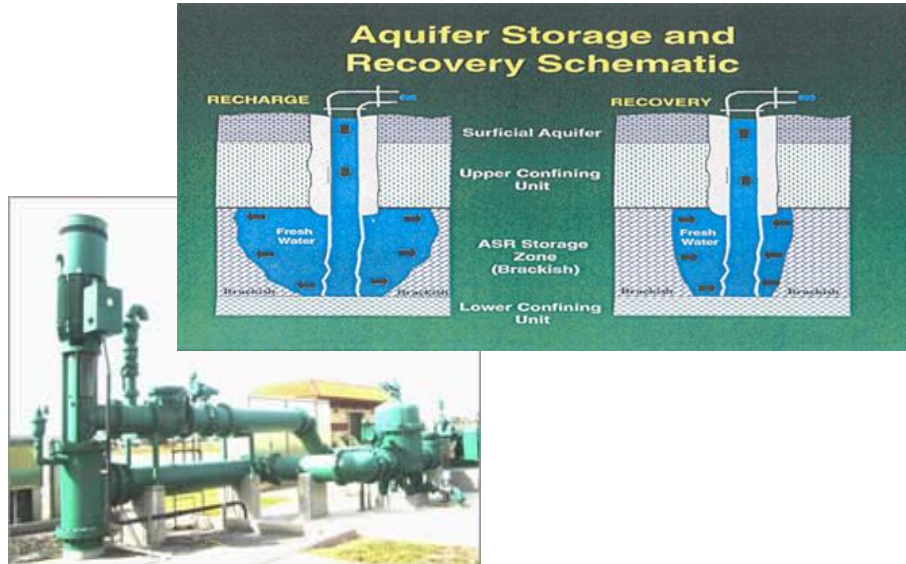
Gator Slough Watershed

- 52 square miles in Lee and Charlotte Counties
- Additional 33 square miles are within Charlotte County, mostly within the Webb Wildlife Management Area.

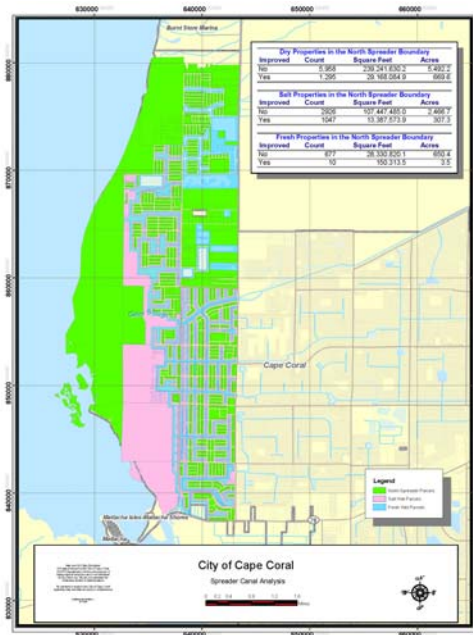
## Gator Slough - Surface Water Management

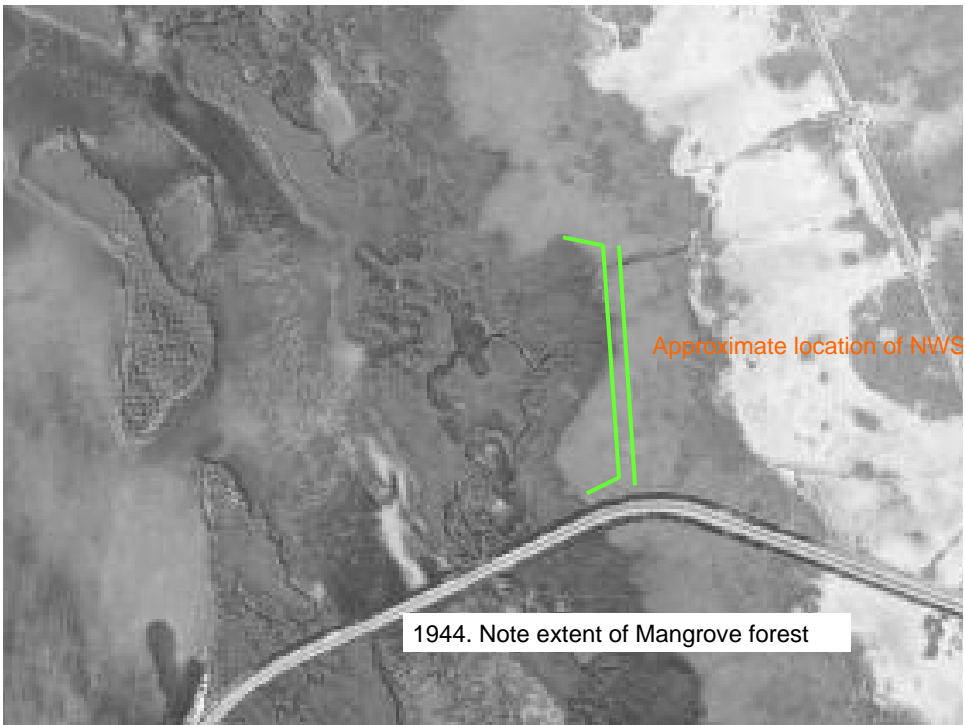
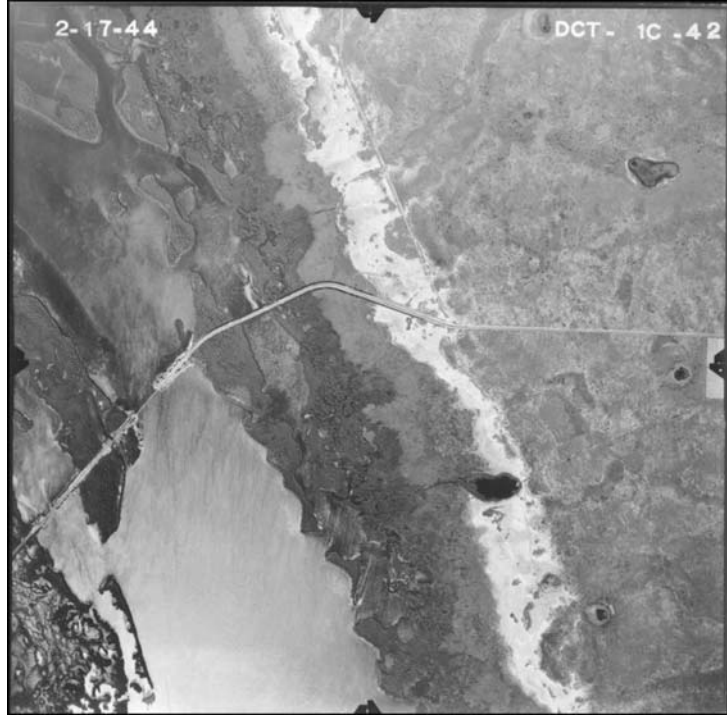


# Aquifer Storage and Recovery (ASR) wells



# North Spreader Waterway







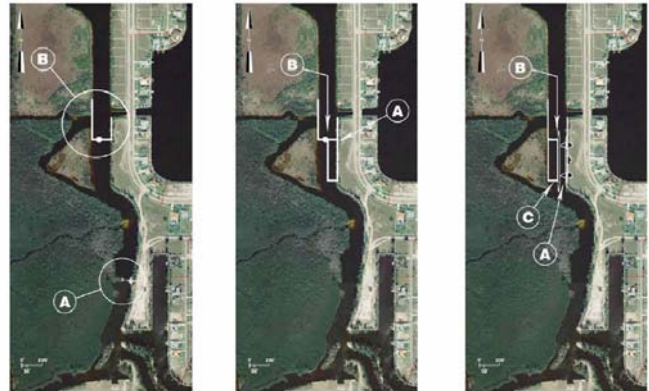
1995 DOQQ  
Breached at  
and between  
arrows



January, 2006 – 35 foot x 7 foot depth breach develops at West end of the lift dam



December 2006 Strategy  
 Relied upon the West side 'holding water'



- | Stage 1  | Stage 2  | Stage 3   |
|--|--|---|
| <ul style="list-style-type: none"> <li>A. Demolish/remove existing stormwater barrier and boat lift.</li> <li>B. Construct new interim stormwater barrier and boat lift. (See Detail 1)</li> </ul> | <ul style="list-style-type: none"> <li>A. Construct East lock chamber and remaining elements of permanent stormwater barrier.</li> <li>B. Vessel transit via boat lift and West lane during construction.</li> </ul> | <ul style="list-style-type: none"> <li>A. Vessel transit via East lock.</li> <li>B. Decommission boat lift.</li> <li>C. Future capability to construct West lock chamber when warranted.</li> </ul> |

MWH December 2006

July 2007  
 Breach 13, 12, 11, 10



Spreader Waterway - Sheet 1

Breach 13 (July 2007)



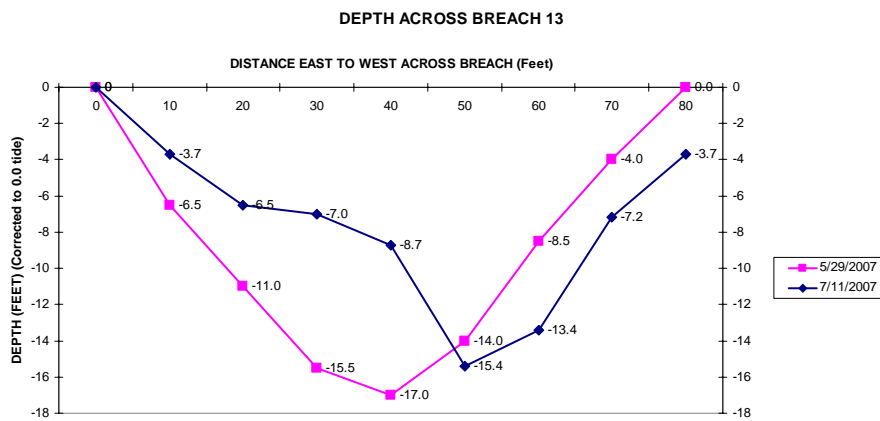
Breach 13, 12, 11 (July 2007)



### Breach 13, 12 (July 2007)



### Breach 13 Section Measurements ~ 20 Feet Wider in 6 weeks



Matlacha Shoaling Looking NW January 2008)

## Sediments from breach 12 & 13



July 2007  
Breach 8



Spreader Waterway - Sheet 2

Breach 8 (July 2007)



July 2007  
Breach 7, 4



Breach 7 (July 2007)



Breach 4 (July 2007)



July 2007  
Breach 1A



Breach 1A



July 2007  
Flow from major breaches 4 & 1A to Charlotte Harbor



Flow from major breaches 4 & 1A to Charlotte Harbor (July 2007)



Flow from major breaches 4 & 1A to Charlotte Harbor (July 2007)



Change in Strategy

Stop the wetlands damage

Find solutions that will actually  
*work*

## Changes in Strategy

- Situation did not fit established regulatory framework
- FDEP & USACE cooperation has been **exceptional**
  - Improvements to the west side of the spreader to hold higher water levels are not viable
  - Without a west side improvements, installation of the new barrier or later boat lock would result in major damage to tidal wetlands
- Short term –
  - Development of the storm water barrier with relocation of the boat lift (~\$4M) and the boat lock was suspended
  - Temporary removal of the existing barrier and boat lift
    - USACE permit in October 2007
    - FDEP Consent Order revision
- Long term is NOT known
- Solutions development via State of Florida “Ecosystem Management Agreement.” (EMA)
  - All stakeholders, permit authorities and the Public

## Ceitus Barrier / Lift Demolition

- April 2, 2008 Electricity services discontinued , boat lift operations suspended
- April 2, 2008 Dismantling of Ceitus Lift to begin
- April 4, 2008 Dredge equipment in place
- June 5, 2008 Barrier removed
- June, July, 2008 – Selected dredging

## Ecosystem Management Agreement Process

- Recognizes limitations of engineered solutions in some ecological settings
- Florida Department of Environmental Protection is lead agency
- Net Environmental Benefits are identified by appropriate and committed stakeholder group
- List of NEBs is ‘truth checked’ and prioritized
  - Research historical data
  - Collect necessary information
  - Identify funding sources and priority
  - Establish schedule for implementation
  - “Plan”, “Do”, “Check”
- Measure and Evaluate Change – Projects must show improvement of conditions (e.g. water quality, habitat, fecundity or other tangible metrics)

## EMA – Stakeholders (list so far)

Interested? - Annette Petrone, Public Works  
 239 574-0730 [apetrone@capecoral.net](mailto:apetrone@capecoral.net)

David	Scott	NWNA, Professional Geologist	Roland	Ottolini	Lee County
Oliver	Clarke	City of Cape Coral	Anura	Karuna	Lee County
Jon	Iglehart	Florida Dept of Env. Protection	Bill	Byle	Charlotte County
Gordon	Romeis	Florida Dept of Env. Protection	Jeffrey	Ruggieri	Charlotte County
Lucy	Blair	Florida Dept of Env. Protection	Lisa	Beever	Charlotte Harbor Natural Estuary Program
Heather	Stafford	Florida Dept of Env. Protection	Catherine	Corbett	Charlotte Harbor Natural Estuary Program
Megan	Fairbent	Florida Dept of Env. Protection	Al	Cheatem	Charlotte Environmental Center
John	Aspiolea	Florida Dept of Env. Protection	Jim	Beever	SW FL Regional Planning Council
Paul	Garner	Florida Dept of Env. Protection	"Skip"	Bergman	U.S. Army Corps of Engineers
Mary	Duncan	Fish and Wildlife Commission	Mark	Sramek	NOAA NMFS HCD
Kim	Dryden	Fish and Wildlife Service	Jennifer	Hecker	Conservancy of Southwest Florida
Mike	Kemmerer	FWS (Babcock-Webb property)	Rick	Williams	Northwest Neighborhood Association
Bill	Foley	South Florida Water Management District	Kirk	Martin	Northwest Neighborhood Association
Phil	Flood	South Florida Water Management District	Phillip	Buchanan	Environmentalist
Rae Ann	Wessel	Sanibel Captiva Conservation Foundation	Marti	Daltry	Riverwatch (Cape Water Action)

Questions ?

